

# HOW TO CONNECT YOUR INTERACTIVE TOY TO YOUR FAVORITE CAMSITE



## HOW TO CONNECT TO:

1. **FLIRT4FREE**

5. **CAM4**

9. ImLive .com

14.   
SkyPrivate

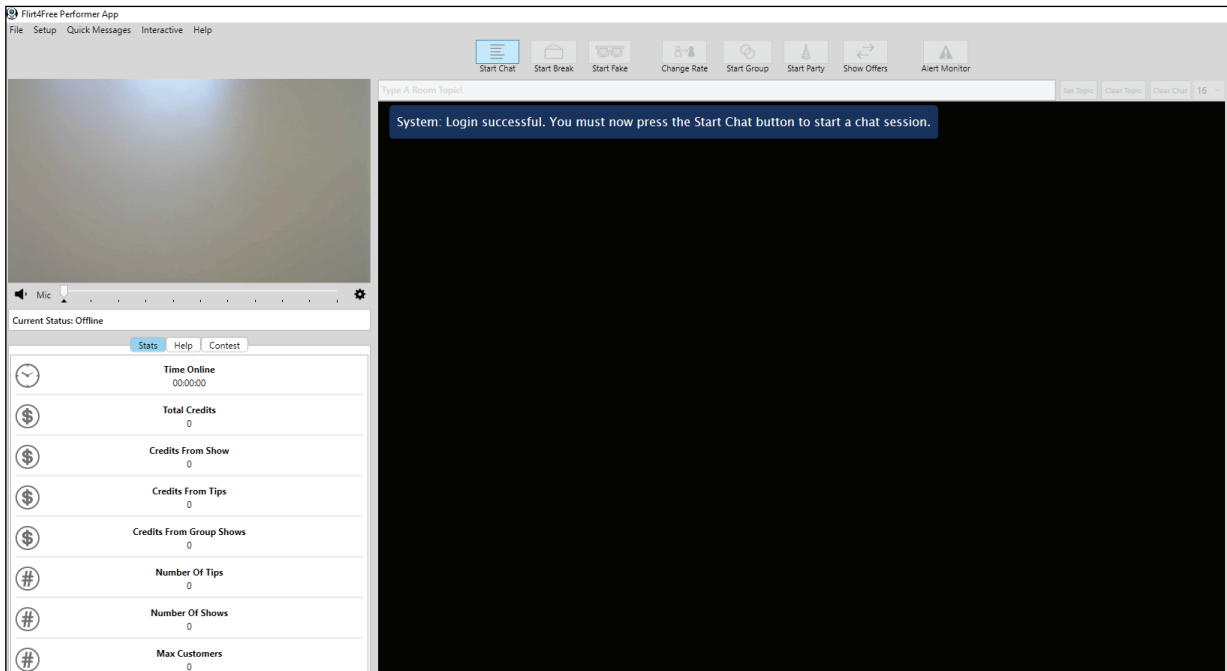
18. **xcams**

23.  streamate  
LIVE SEX CAMS 24/7

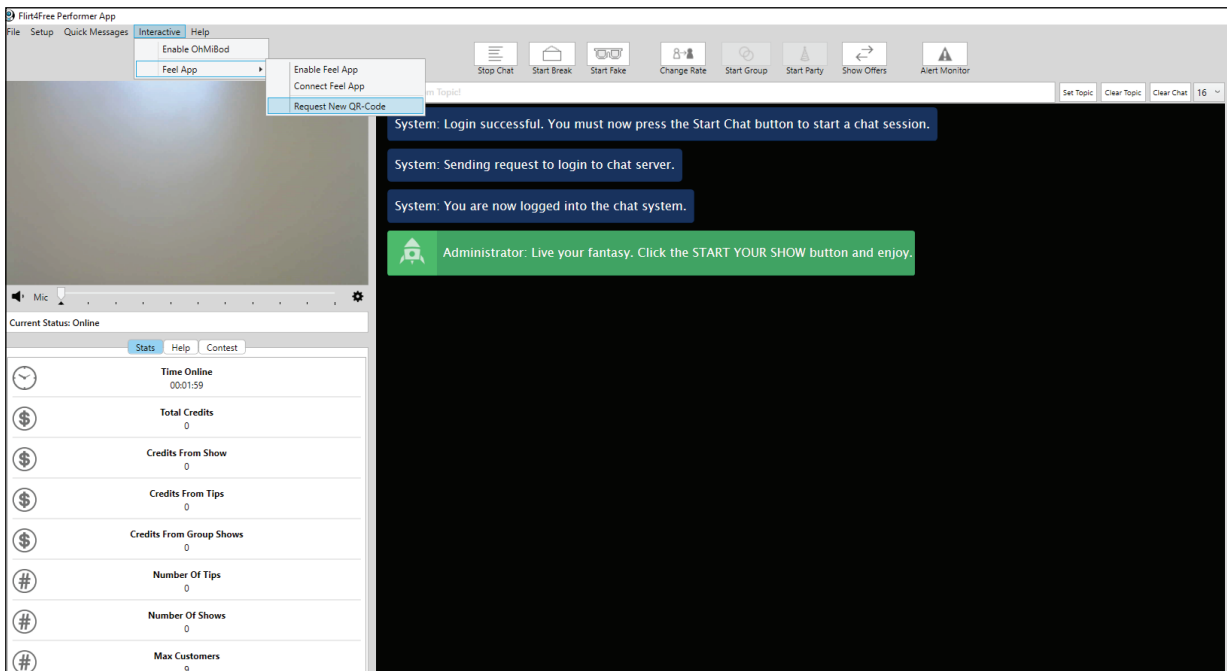
30.  **STRIPCHAT**

# FLIRT4FREE

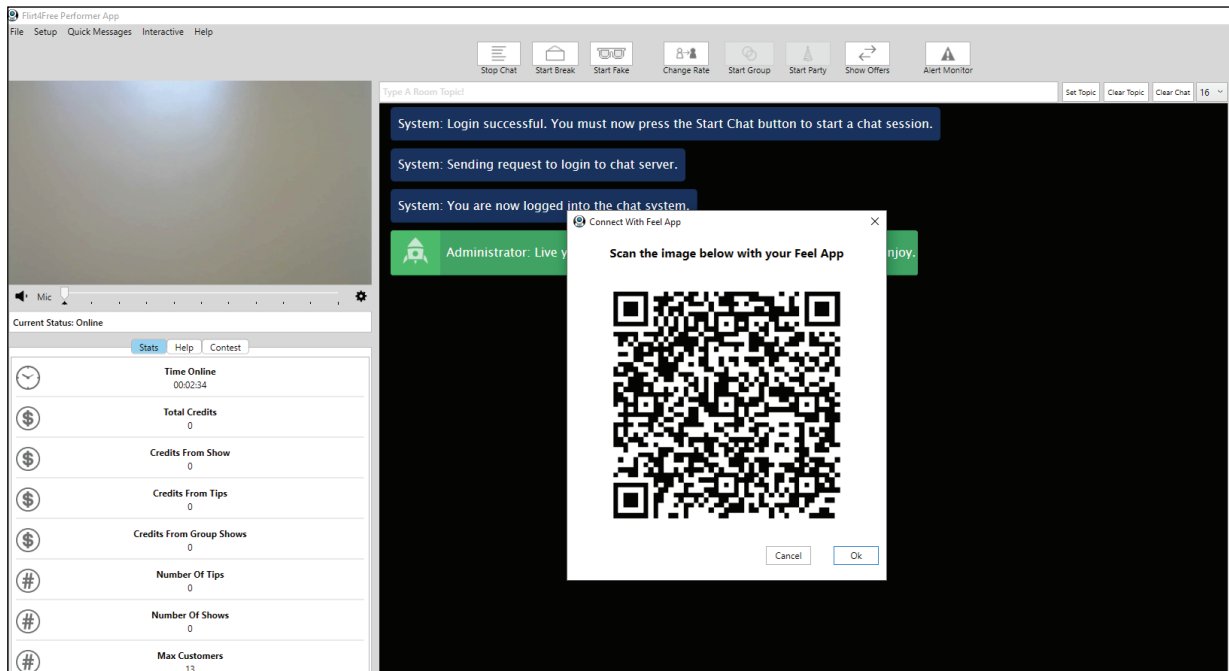
1. Go to <https://studios.flirt4free.com/>
2. Log in with your username and password.



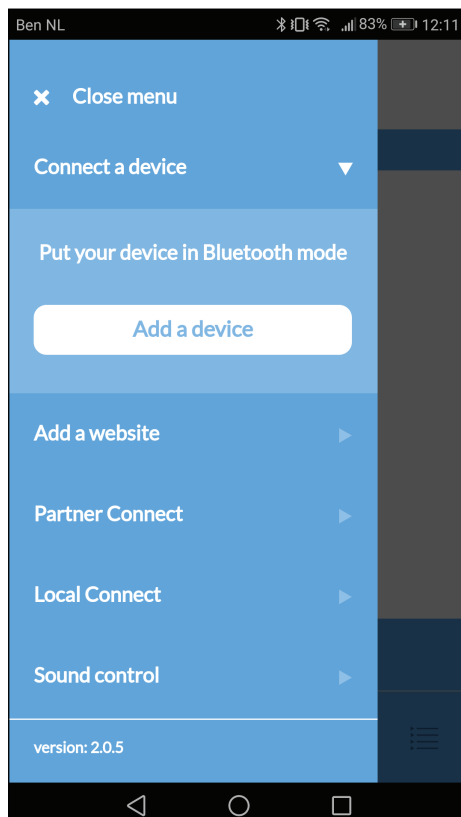
3. Once you have opened your F4F Performer application, please select "start chat"



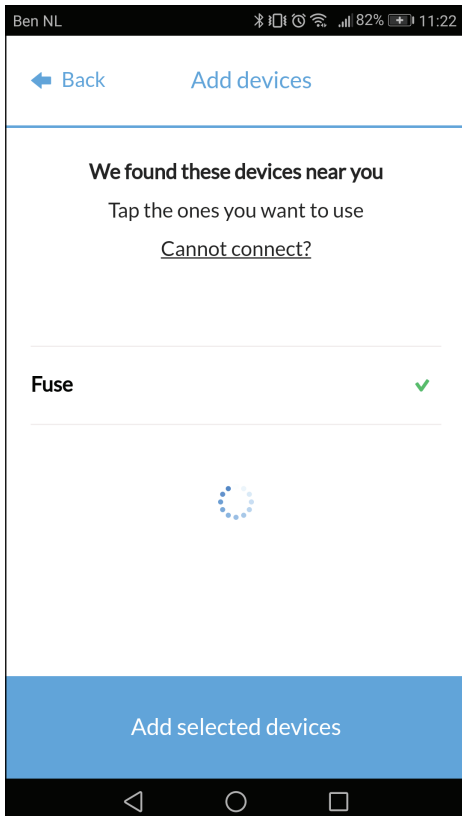
4. After you have set up your webcam/microphone, and started your chat, please go to the "interactive" button, and select request new QR code.



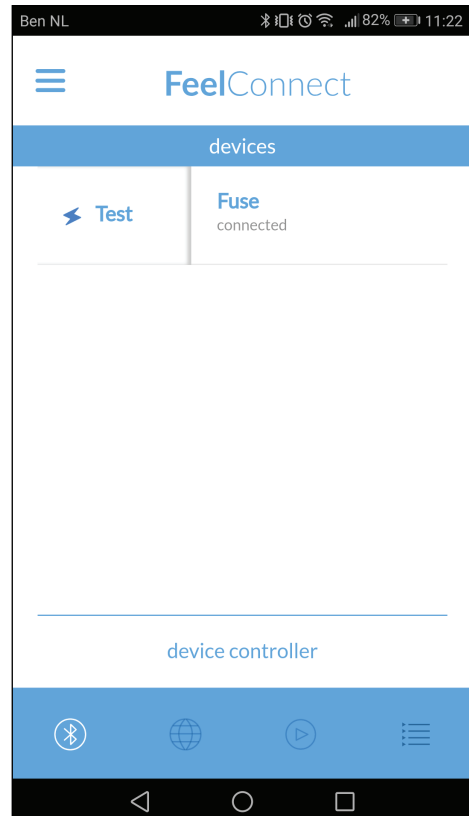
5. A QR code will pop up.



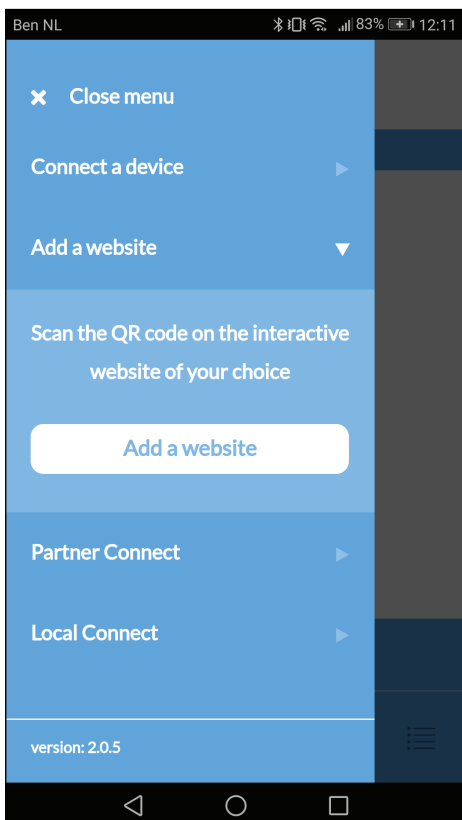
6. Please go to the FeelConnect app on your phone (if you haven't done so, please download it via the iOS App store or Google Play Store). Select "Add a device". Side-note: Make sure your Bluetooth is on and your device is in Bluetooth mode.



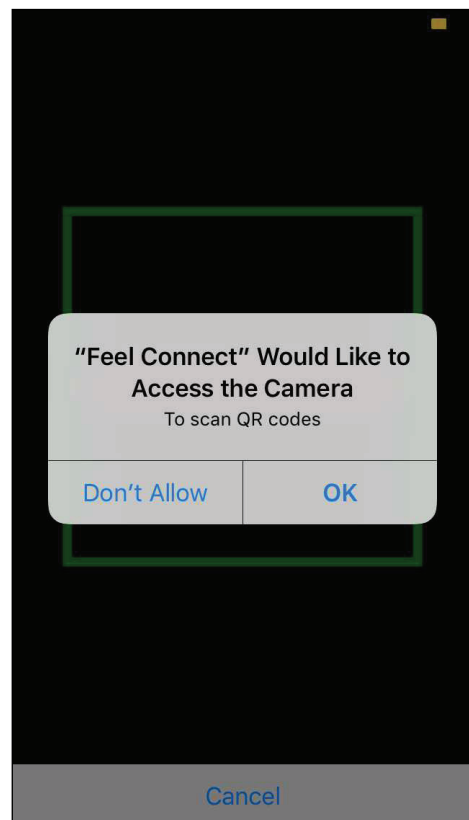
7. Please select the device you would like to use. Wait for the check mark on the right side to turn green. After the green check has appeared, please select “add selected devices”.



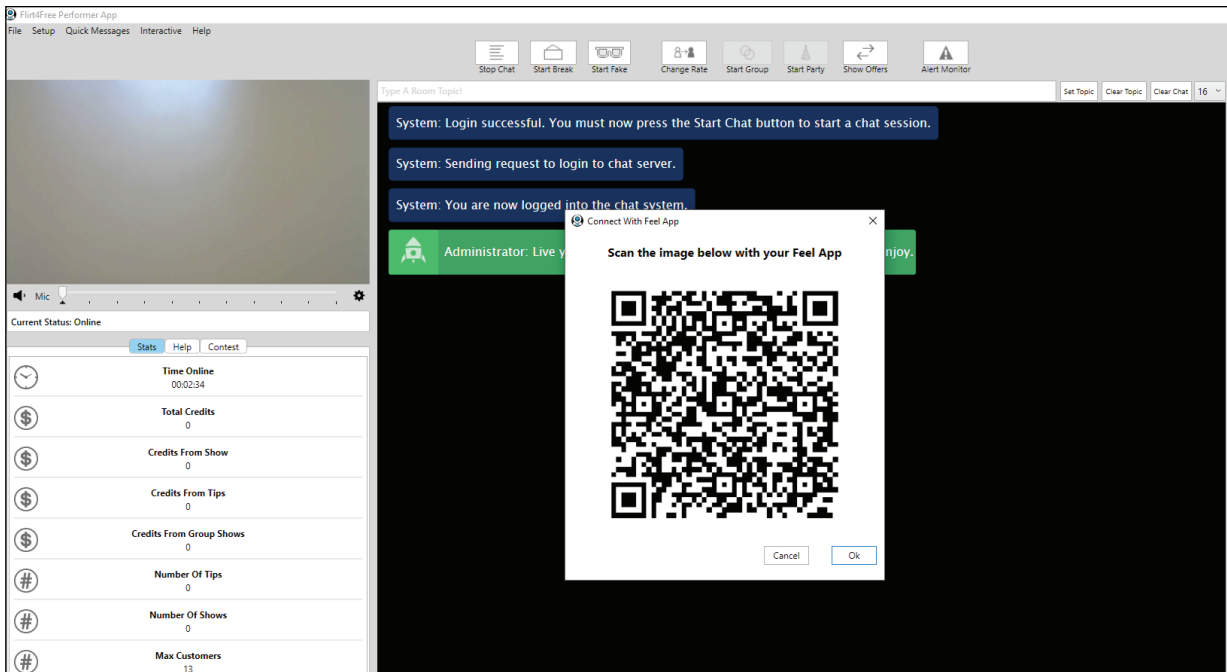
8. Once you have selected “add selected devices”, the app will redirect you to this page indicating that your device is now connected to the app.



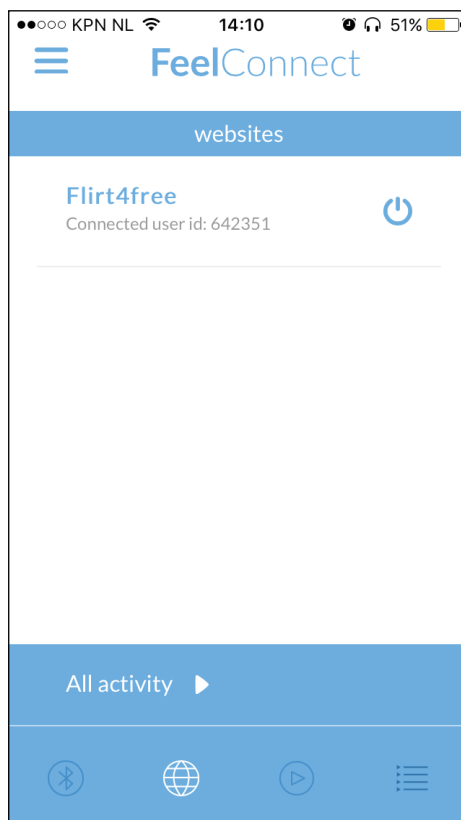
9. Now to connect the device to the Flirt-4Free, select “Add a website”.



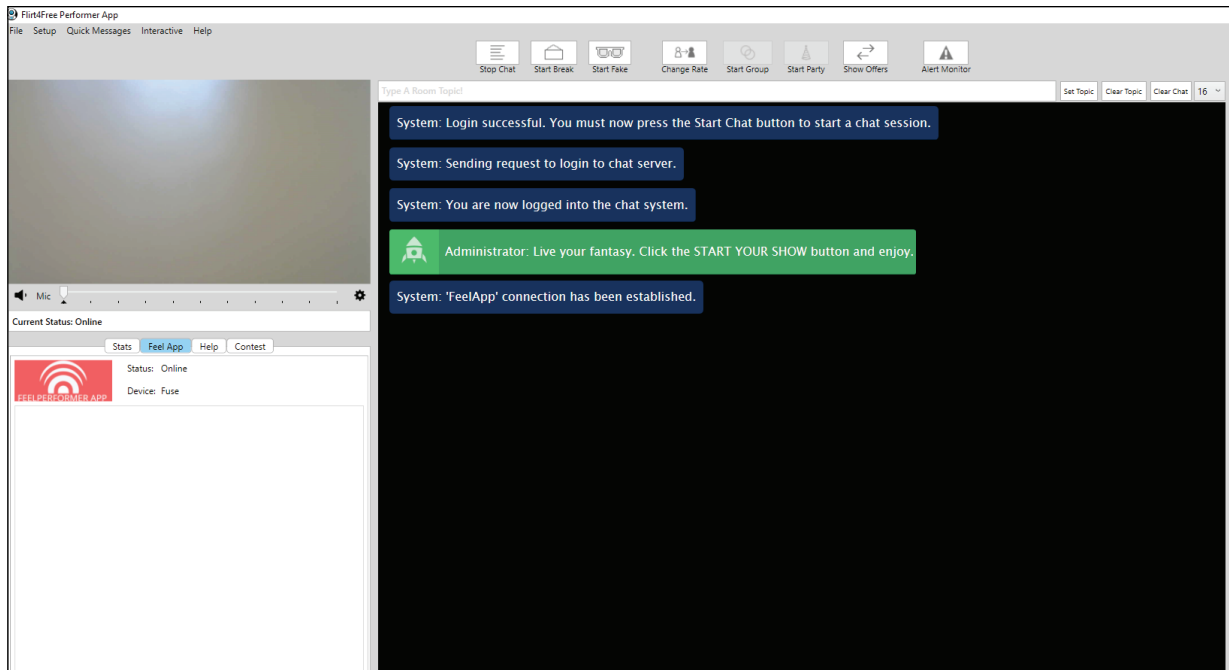
10. Once you click “Add a website”, a QR code scanner will show up.



11. Go back to the Flirt4Free performer application, and scan the QR code.



12. After you have scanned the QR code, it will show that you are connected to Flirt4Free's performer application on the FeelConnect App.

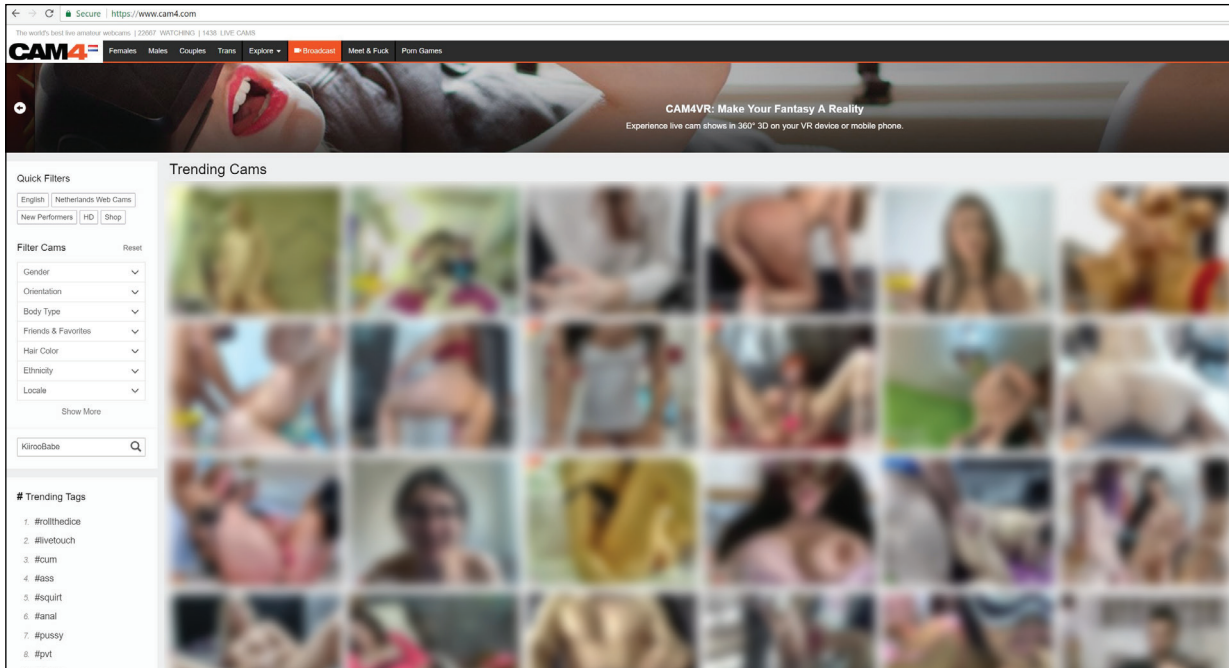


13. On the left side of the Flirt4Free Performer app, it will indicate which device you are currently connected to, and the status of it!

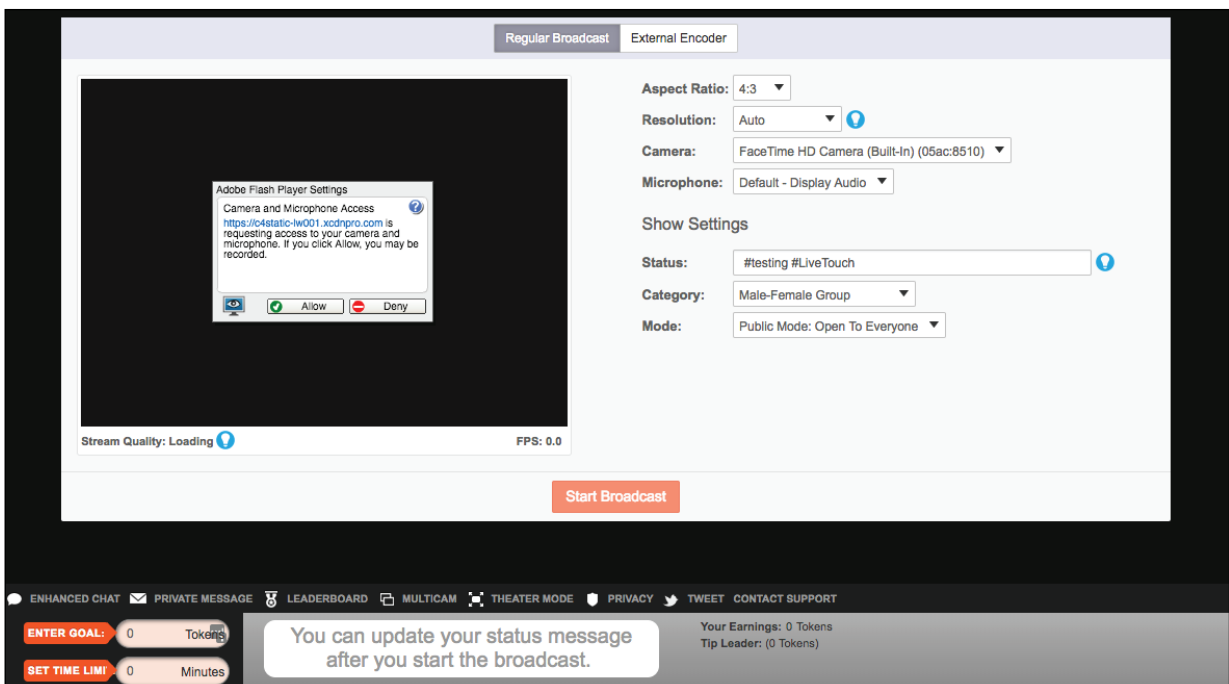
**You are all set up and all tips will automatically be handled by the FeelConnect app and will make your interactive device vibrate!**



1. Go to <https://www.cam4.com/>
2. Log in with your username and password.

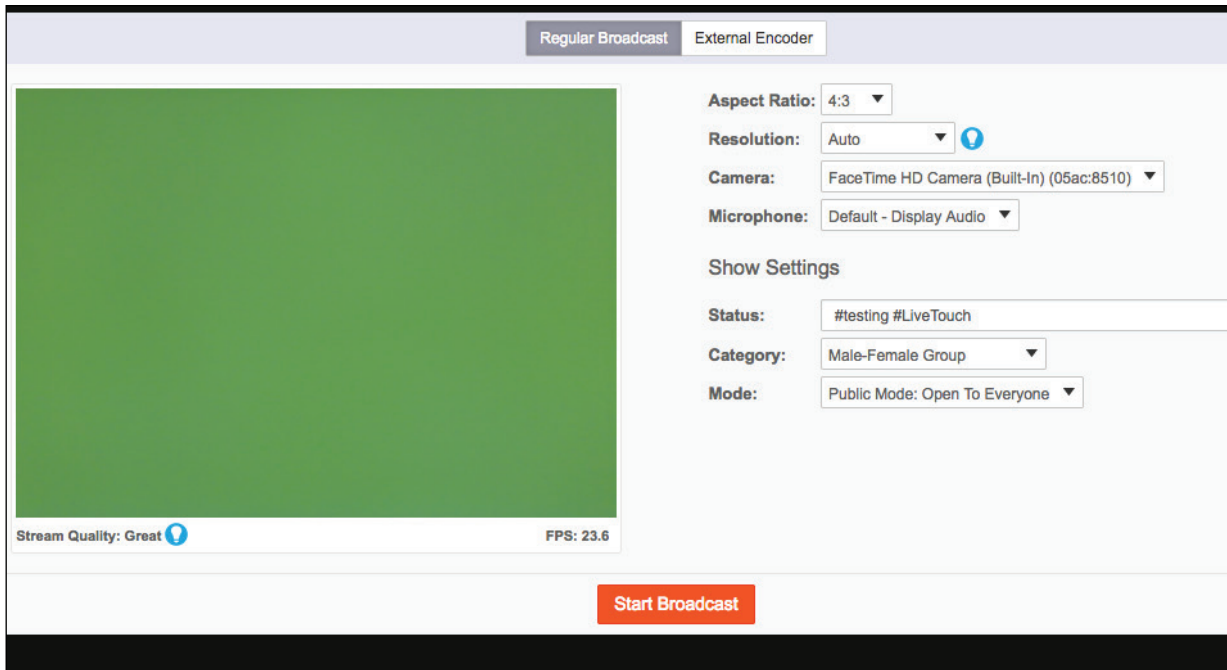


3. Press "broadcast" in the menu bar.

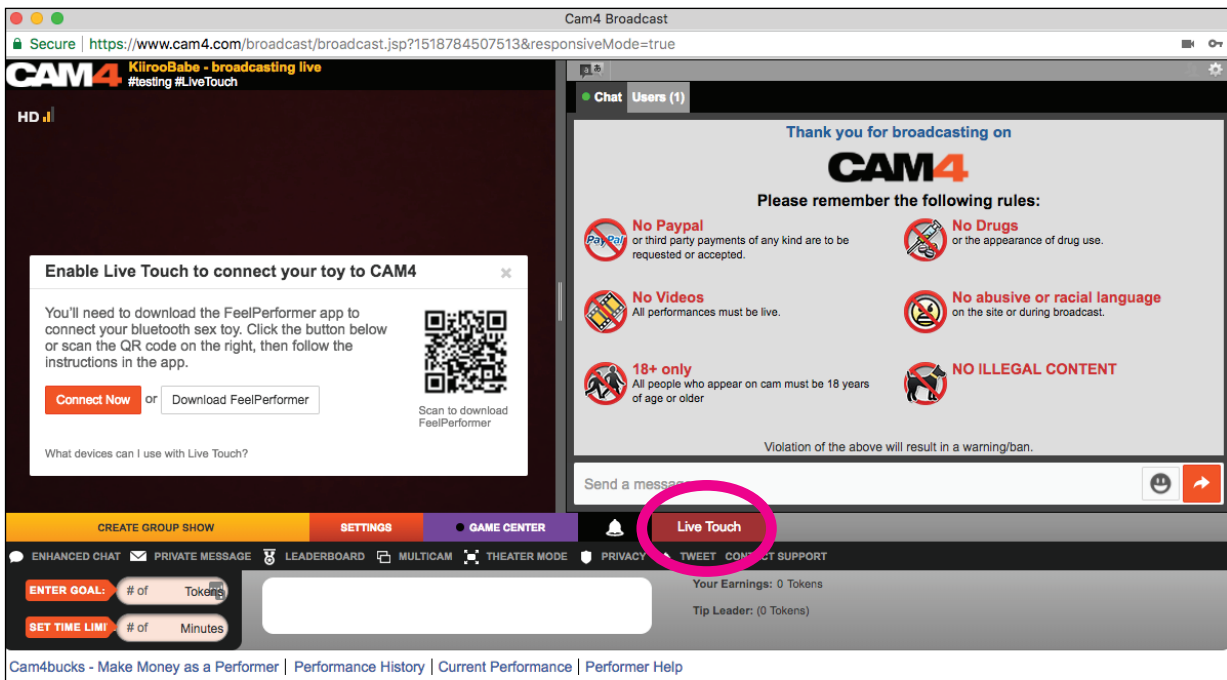


4. When the Cam4 Broadcast window opens, press "allow" in the Adobe Flash Player Settings Box.





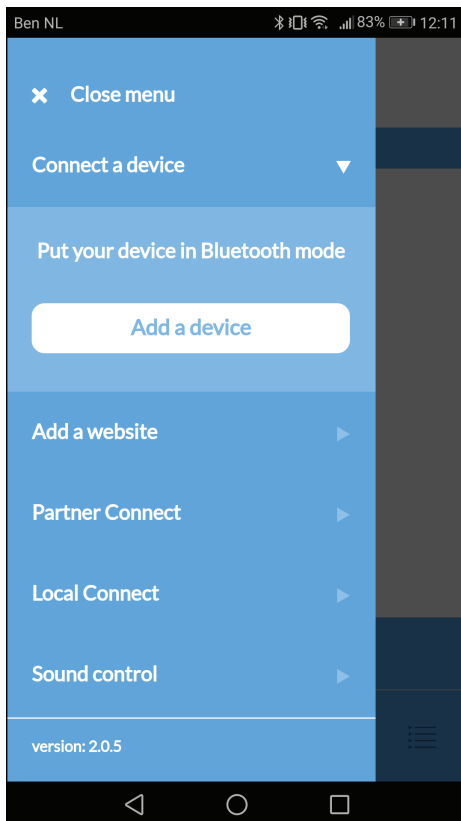
5. Fill in the information required on the right side of the screen.



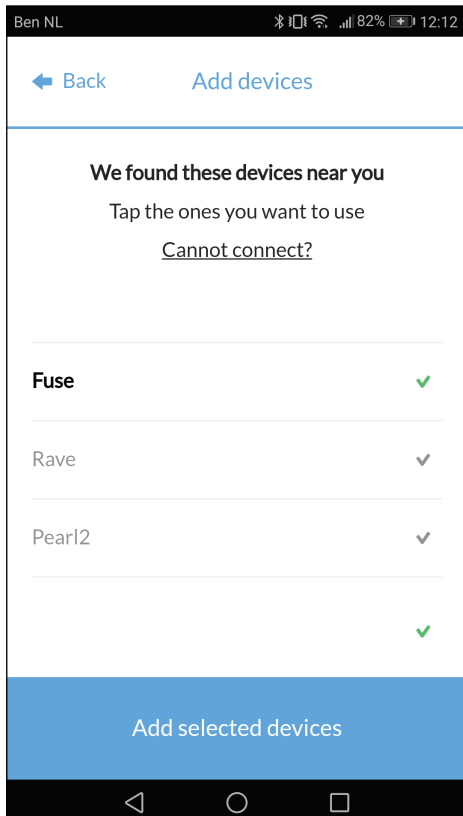
6. Click "Start Broadcast".

7. Once you are broadcasting, at the bottom of the text box, hit "LIVE TOUCH" in the bottom right.

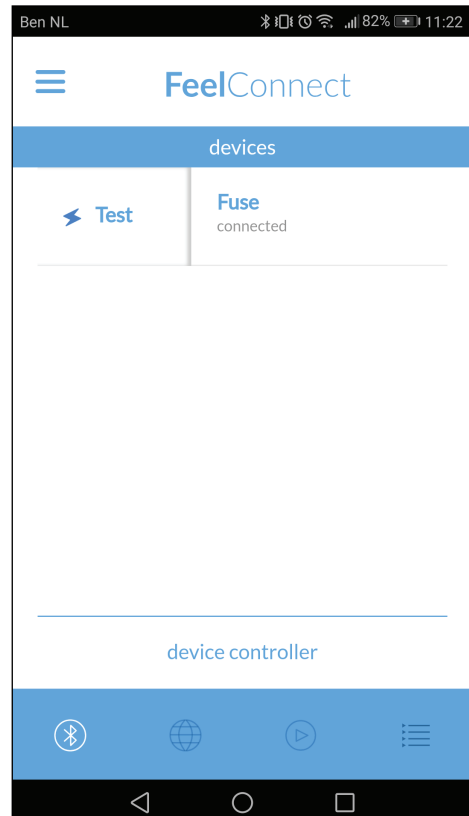
8. A pop-up window will show that says "Enable Live Touch to connect your toy to Cam4". Select "connect now" or "Download FeelConnect"



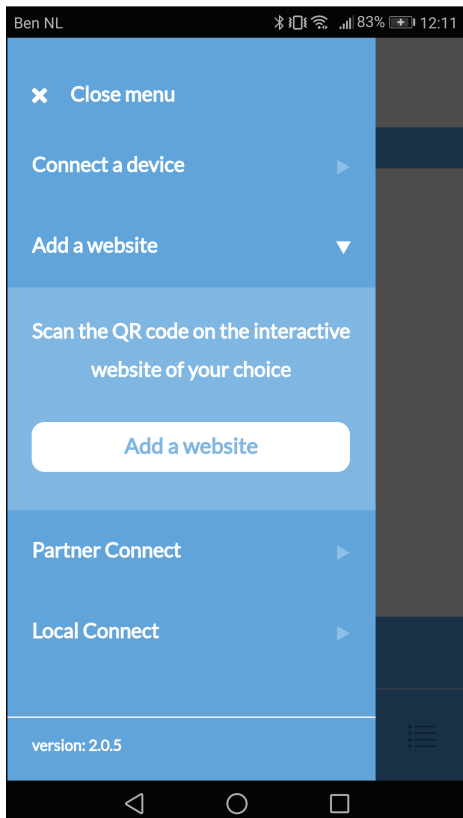
9. Please go to the FeelConnect app on your phone (if you haven't done so, please download it via the iOS App store or Google Play Store). Select "Add a device". Side-note: Make sure your Bluetooth is on and your device is in Bluetooth mode.



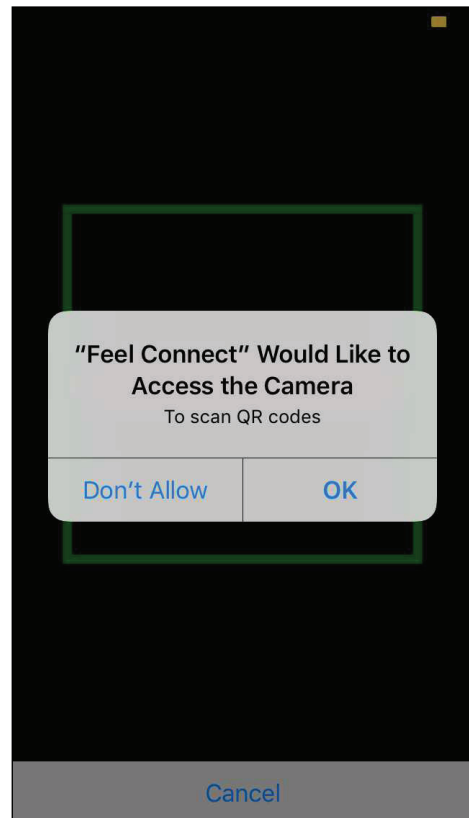
10. Please select the device you would like to use. Wait for the check mark on the right side to turn green. After the green check has appeared, please select "add selected devices".



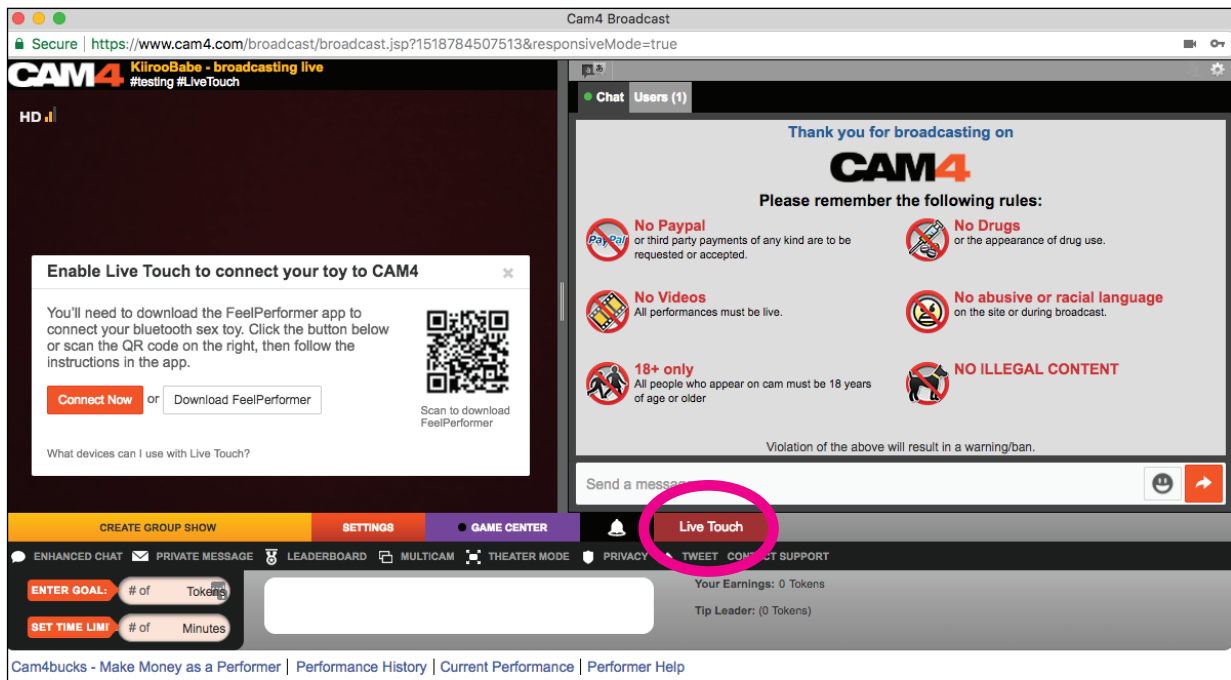
11. Once you have selected "add selected devices", the app will redirect you to this page indicating that your device is now connected to the app.



12. To connect the device to Cam4, select "Add a website".



13. Once you click "Add a website", a QR code scanner will show up.

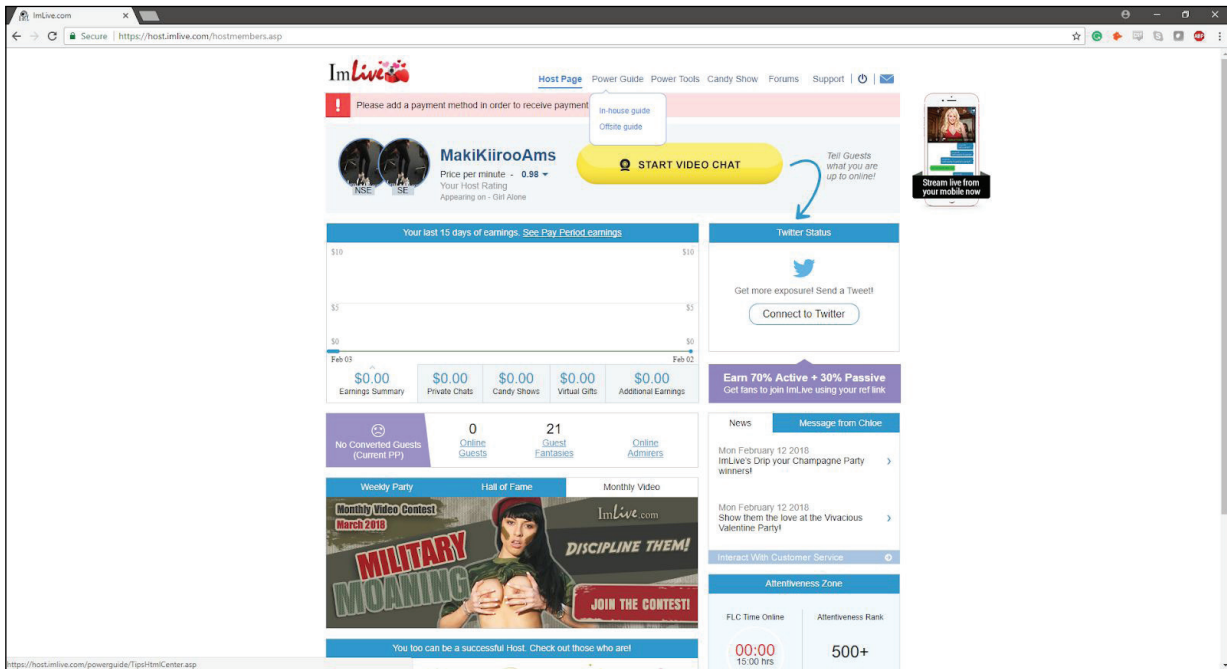


14. Now scan the QR code with the FeelConnect app.

15. Once you have scanned the QR code you are now connected to Cam4 and you can edit your tip target / goal.

**You are all set up and all tips will automatically be handled by the FeelConnect app and will make your interactive device vibrate!**

1. Go to <https://www.lmlive.com/>
2. Log in with your username and password.



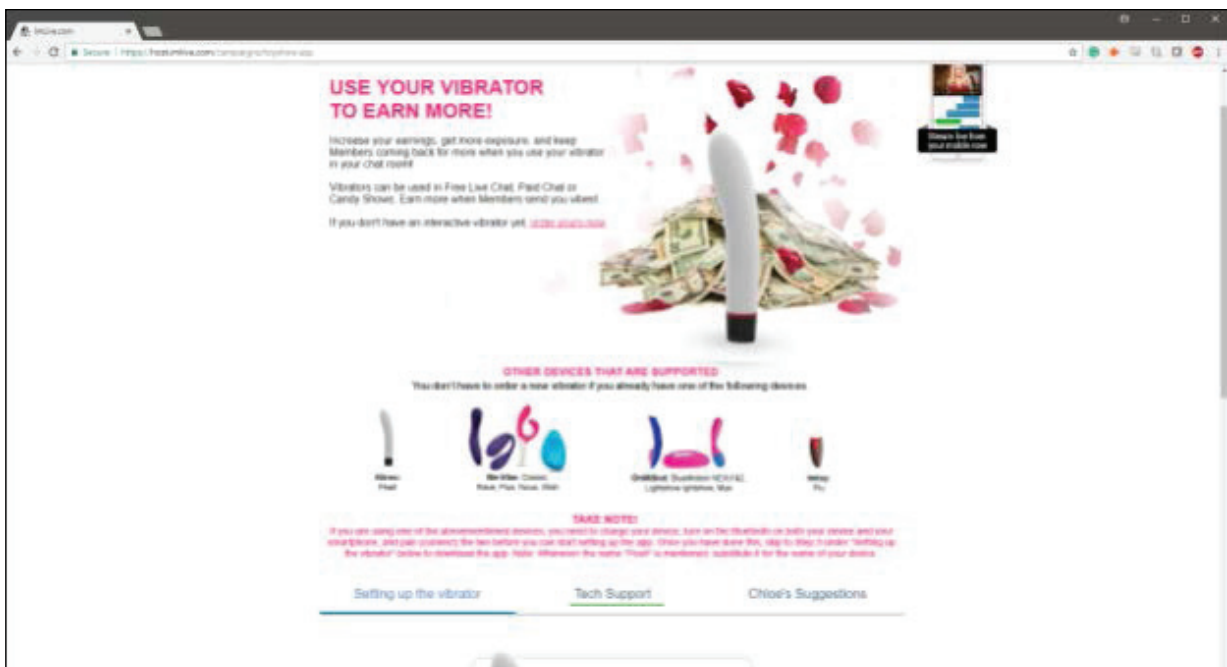
3. Once you have logged into ImLive as a performer, please select "Power Guide".



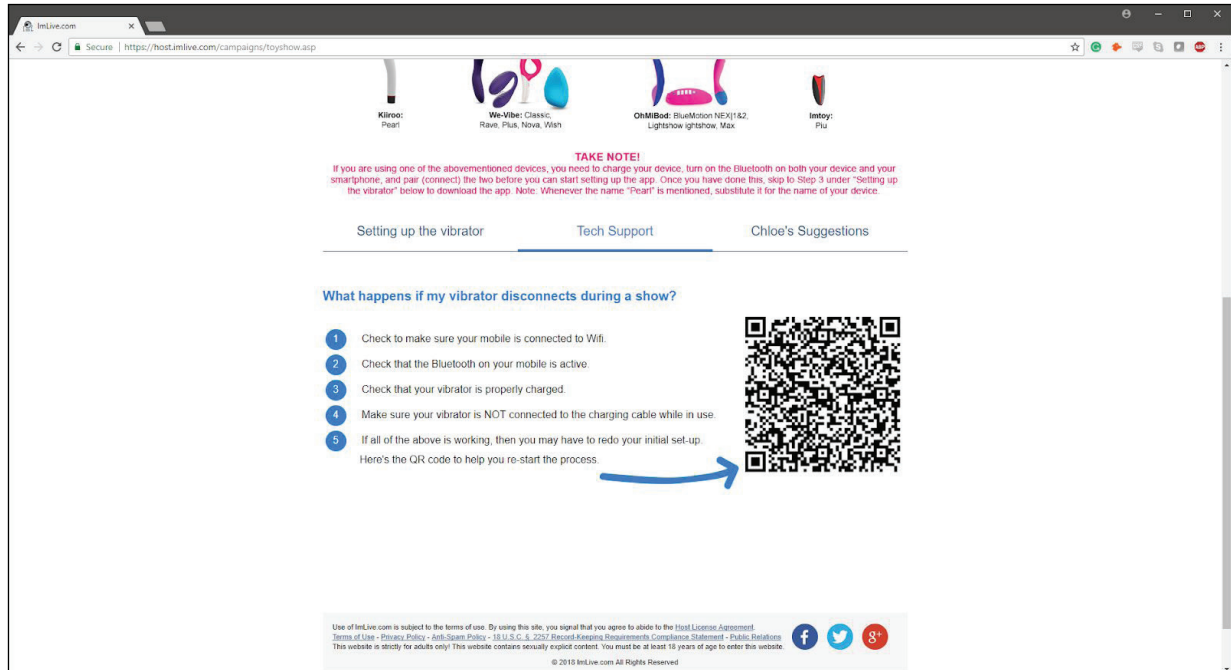
4. Please select vibrators in the "in-house guide" category



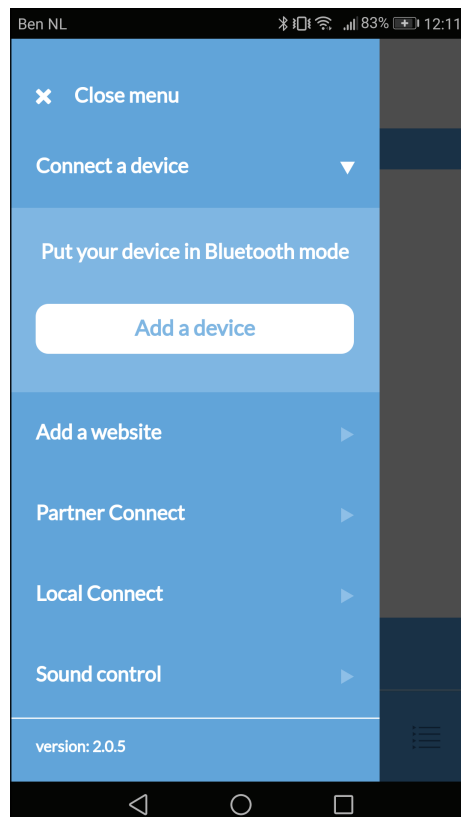
5. Please select “Set up your vibrator” and click on the link that is on “Click here for a step-by-stepguide”



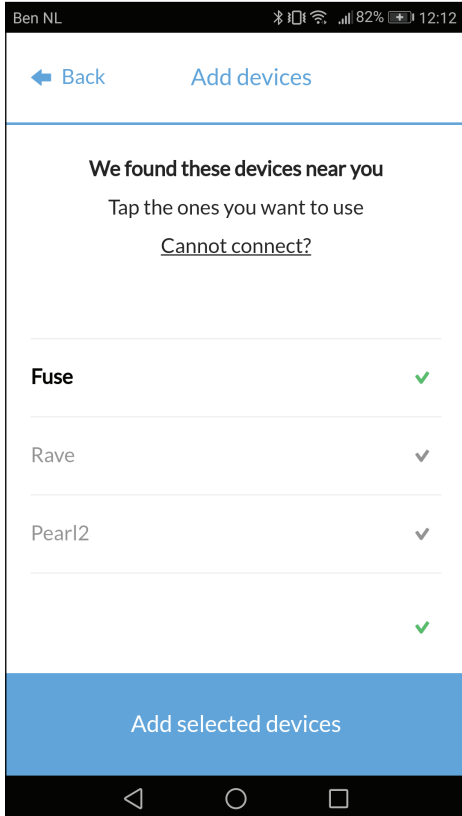
6. Please select “Tech Support”



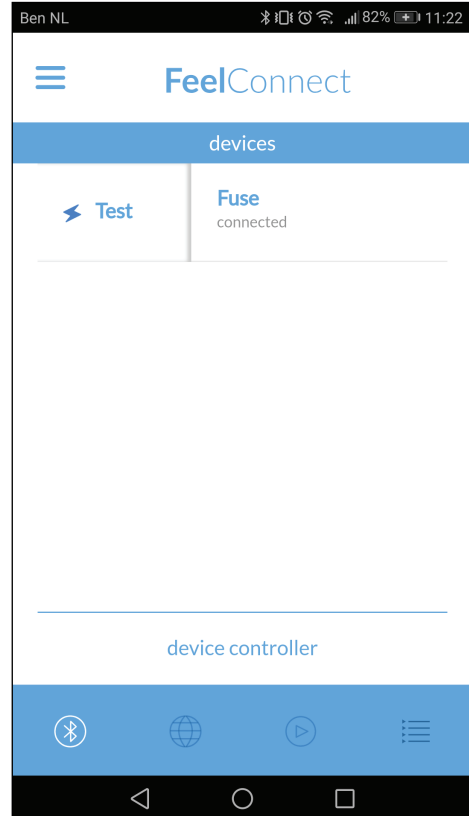
7. A QR code will show up.



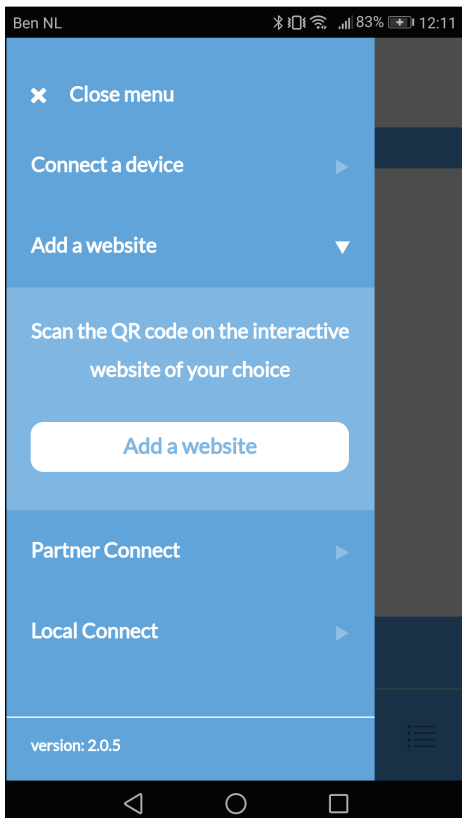
8. Please go to the FeelConnect app on your phone (if you haven't done so, please download it via the iOS App store or Google Play Store). Select "Add a device". Side-note: Make sure your Bluetooth is on and your device is in Bluetooth mode.



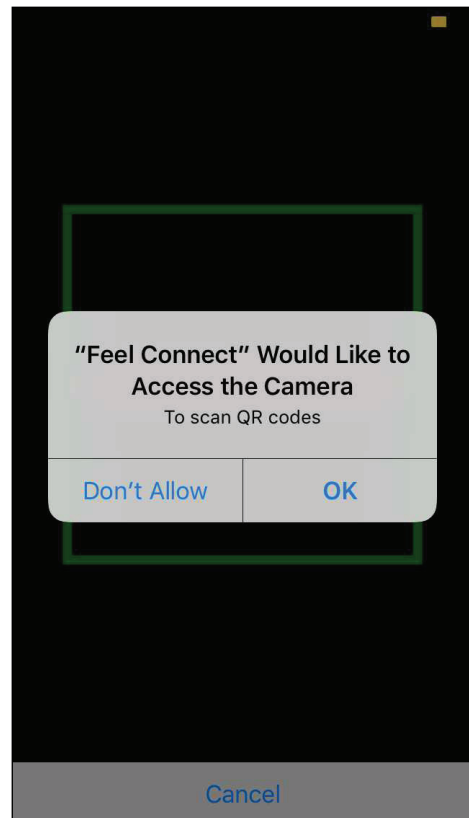
9. Please select the device you would like to use. Wait for the check mark on the right side to turn green. After the green check has appeared, please select “add selected devices”.



10. Once you have selected “add selected devices”, the app will redirect you to this page indicating that your device is now connected to the app.







11. Now to connect the device to the ImLive, select “Add a website”.



12. Once you click “Add a website”, a QR code scanner will show up. Scan the QR code from the ImLive tech support’s page, then you are connected.

lnLive.com  
 Secure | https://host.lmlive.com/campaigns/toyshow.asp


 Kissed Pearl  
 We-Vibe Classic, Rave, Plus, Nova, Wish  
 OhMiBod! BlueMotion NX1142, Lightshow, Max  
 Imtop Fluz

**TAKE NOTE!**  
 If you are using one of the abovementioned devices, you need to charge your device, turn on the Bluetooth on both your device and your smartphone, and pair (connect) the two before you can start setting up the app. Once you have done this, skip to Step 3 under "Setting up the vibrator" below to download the app. Note: Whenever the name "Pearl" is mentioned, substitute it for the name of your device.

Setting up the vibrator    Tech Support    Chloe's Suggestions

**What happens if my vibrator disconnects during a show?**

- 1 Check to make sure your mobile is connected to Wifi.
- 2 Check that the Bluetooth on your mobile is active.
- 3 Check that your vibrator is properly charged.
- 4 Make sure your vibrator is NOT connected to the charging cable while in use.
- 5 If all of the above is working, then you may have to redo your initial set-up. Here's the QR code to help you re-start the process.



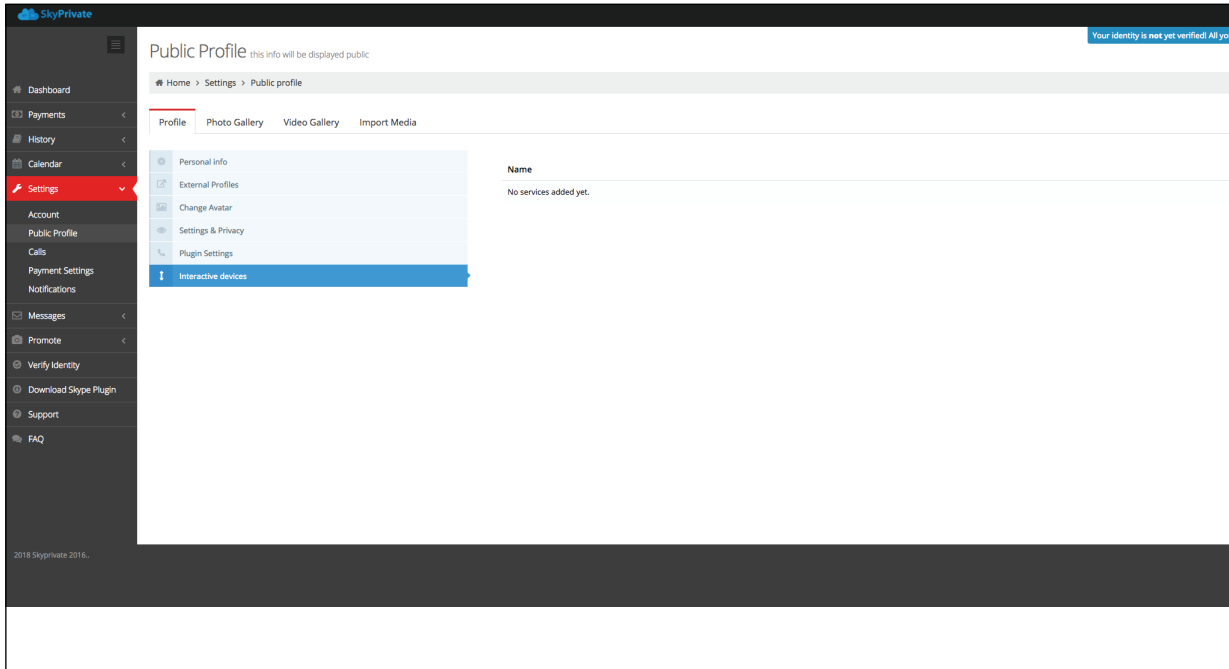
© 2010 lnLive.com All Rights Reserved

**You are all set up and all tips will automatically be handled by the FeelConnect app and will make your interactive device vibrate!**

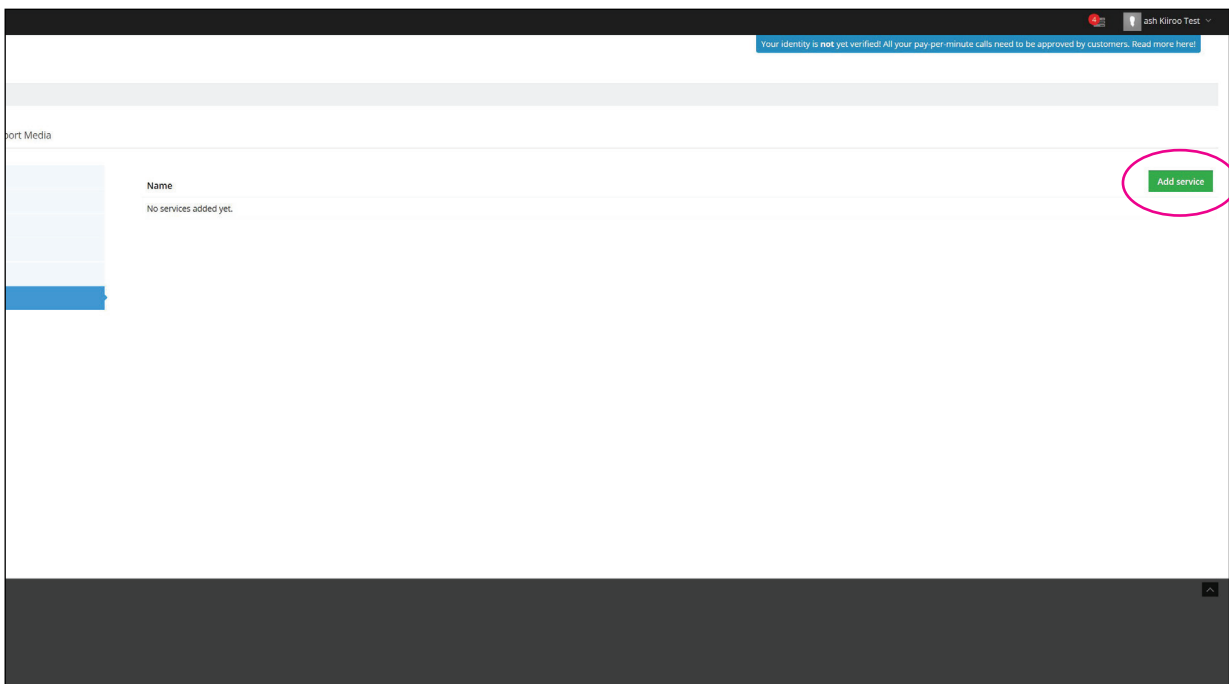




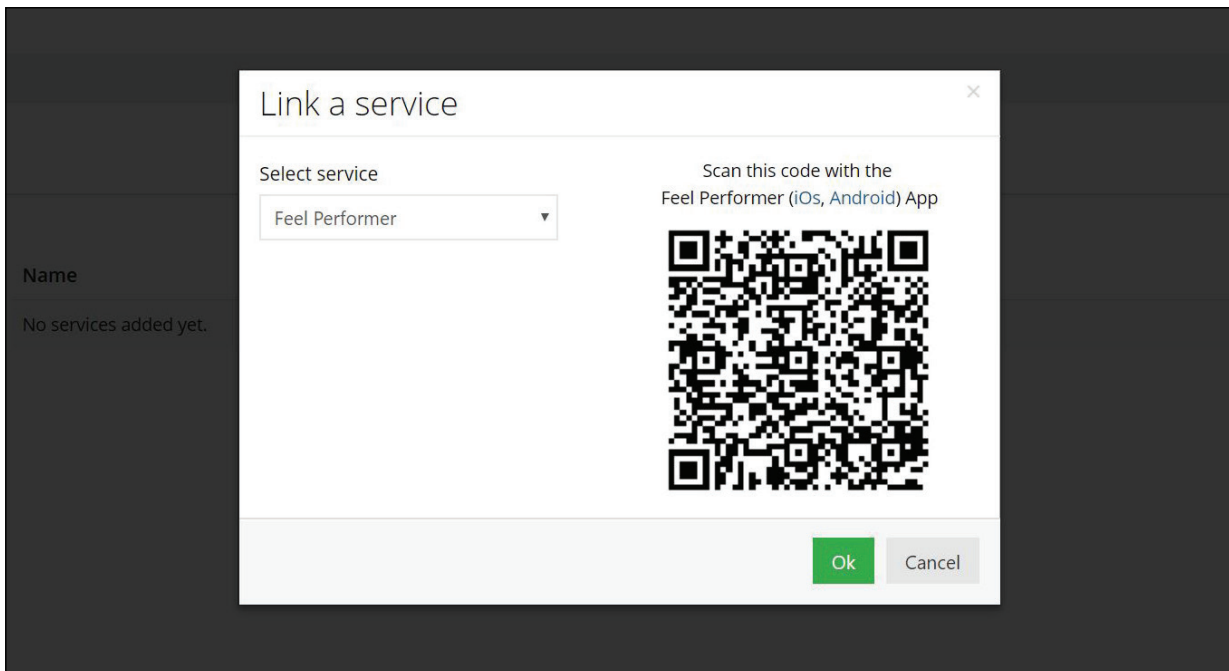
1. Go to <https://www.skyprivate.com/>
2. Log in with your username and password



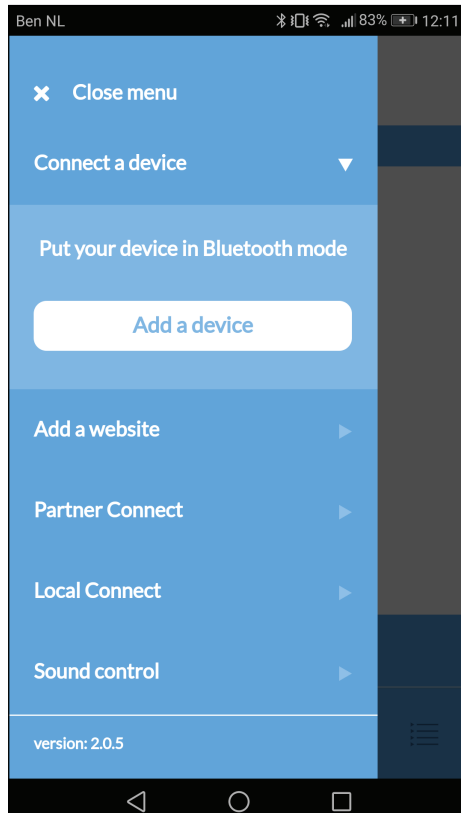
3. When you have reached the Dashboard on the side bar on the left click "settings".
4. Settings will drop a new menu down, click "Public Profile".
5. On the bottom of the Public Profile menu click "interactive devices".



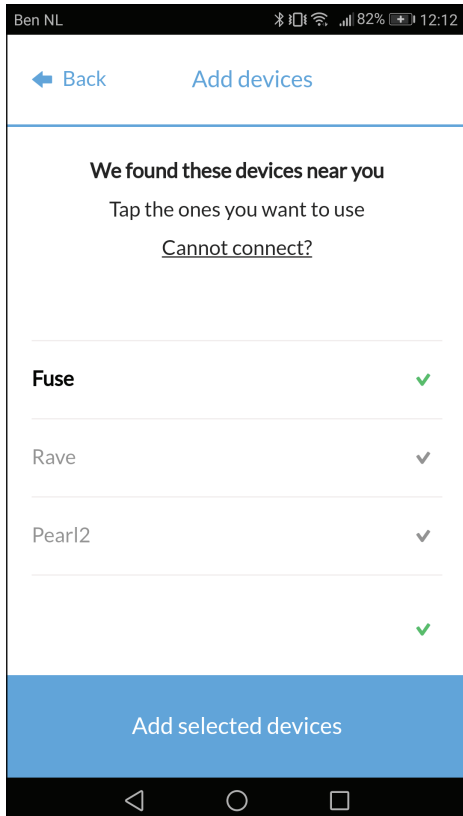
6. On the far right there is a green button that says, "Add Service", click on it.



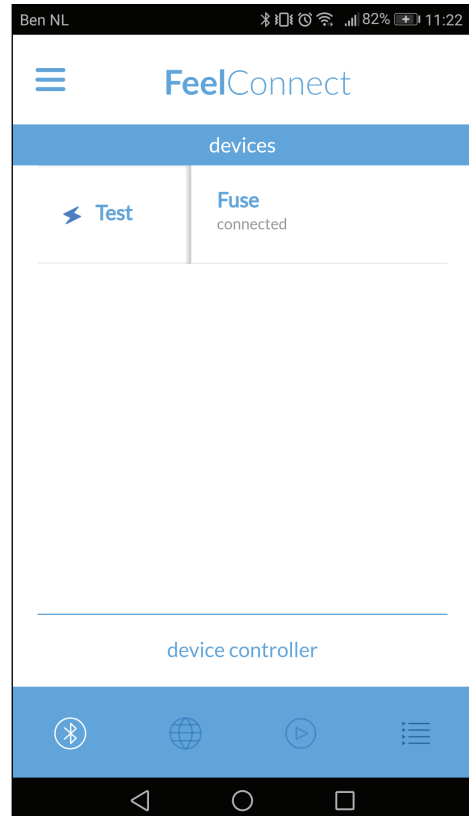
7. Select FeelConnect as the Service.



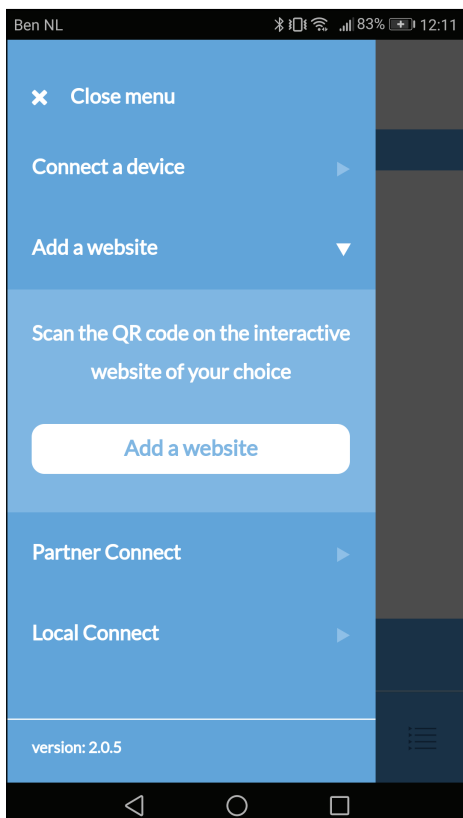
8. Please go to the FeelConnect app on your phone (if you haven't done so, please download it via the iOS App store or Google Play Store). Select "Connect a device". Sidenote: Make sure your Bluetooth is on and your device is in Bluetooth mode.



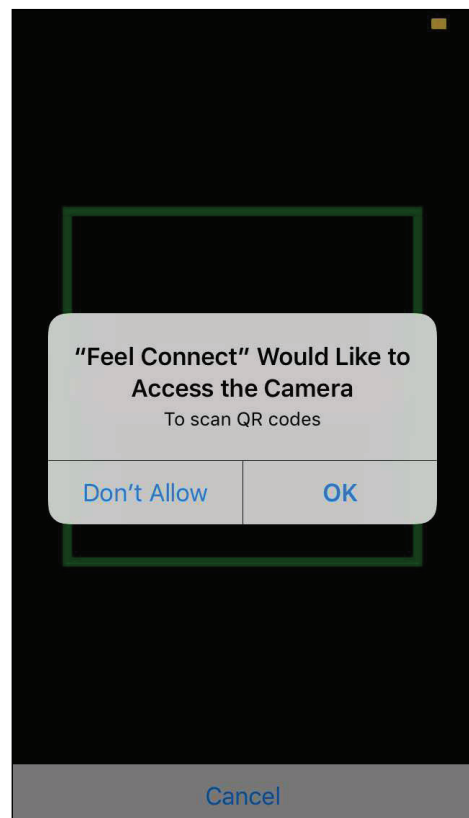
9. Please select the device you would like to use. Wait for the check mark on the right side to turn green. After the green check has appeared, please select "add selected devices".



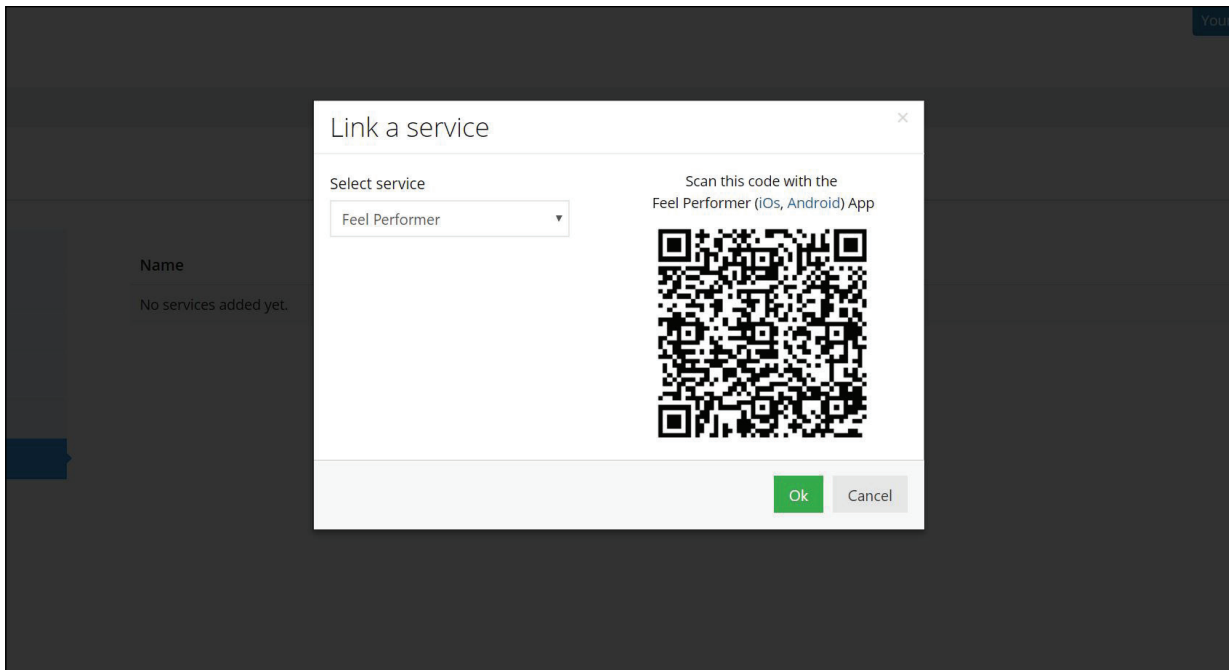
10. Once you have selected "add selected devices", the app will redirect you to this page indicating that your device is now connected to the app.



11. Now to connect the device to the Skyprivate, select "Add a website".



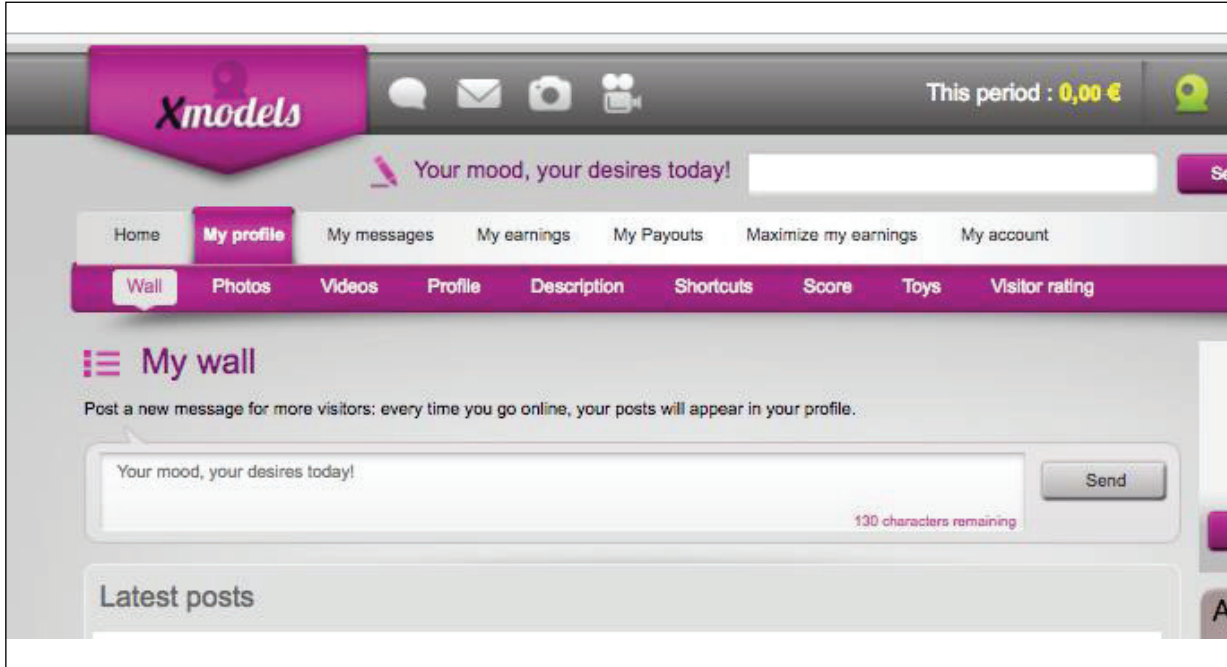
12. Once you click "Add a website", a QR code scanner will show up.



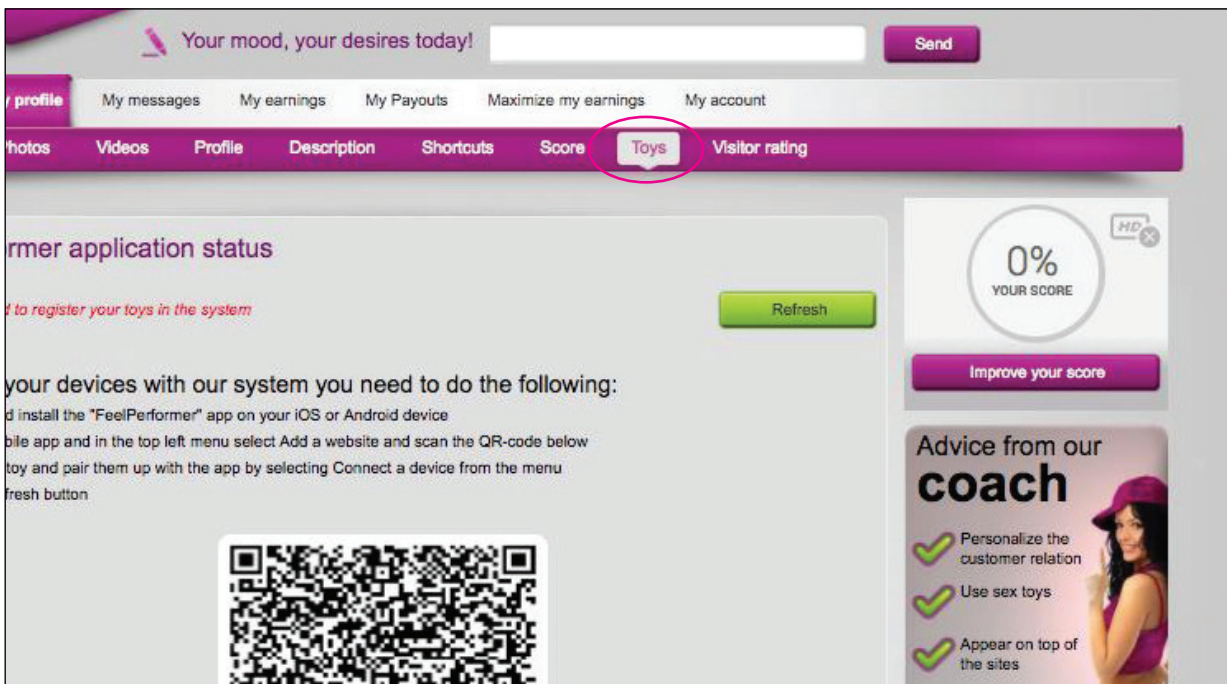
13. Scan the QR code
14. Click "OK" and you are now connected!

**You are all set up and all tips will automatically be handled by the FeelConnect app and will make your interactive device vibrate!**

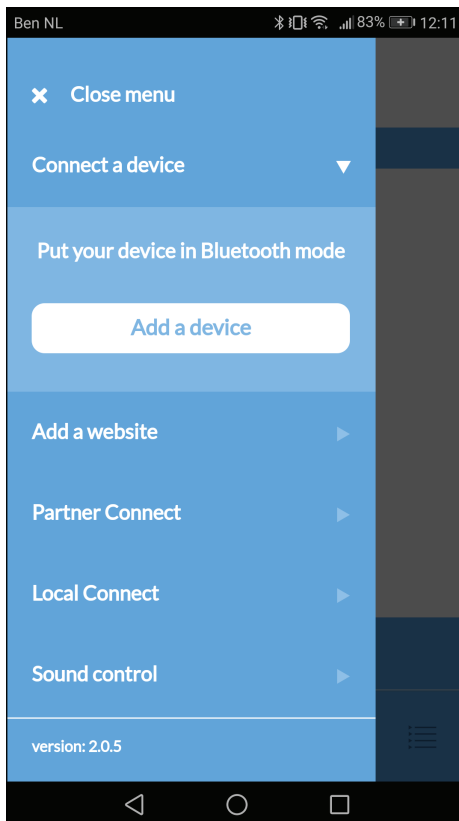
1. Go to <https://www.xmodels.ch>
2. Log in with your username and password



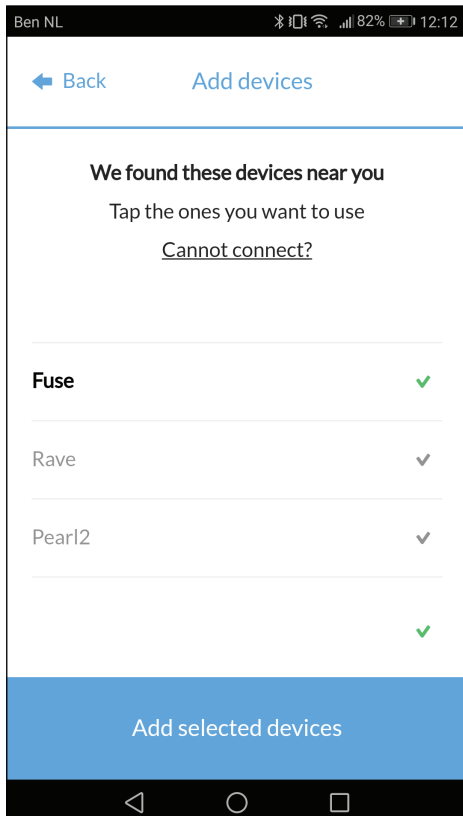
3. Press 'My Profile' in the menu bar



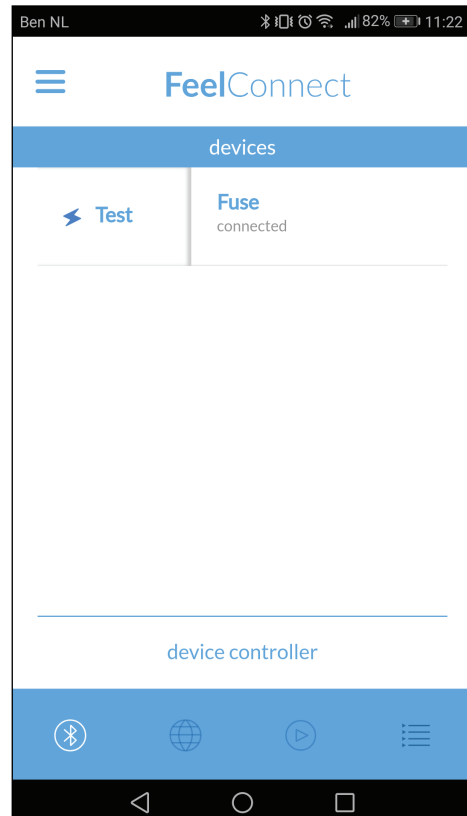
4. Select "Toys" in the pink bar.



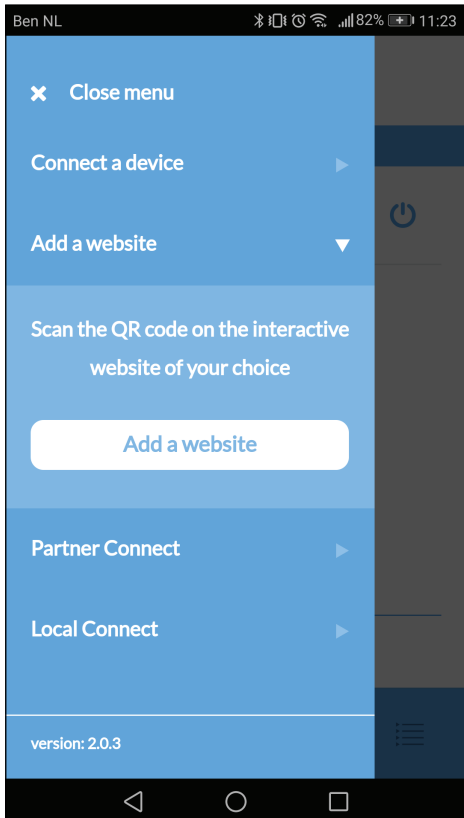
5. Please go to the FeelConnect app on your phone (if you haven't done so, please download it via the iOS App store or Google Play Store). Select "Connect a device". Sidenote: Make sure your Bluetooth is on and your device is in bluetooth mode.



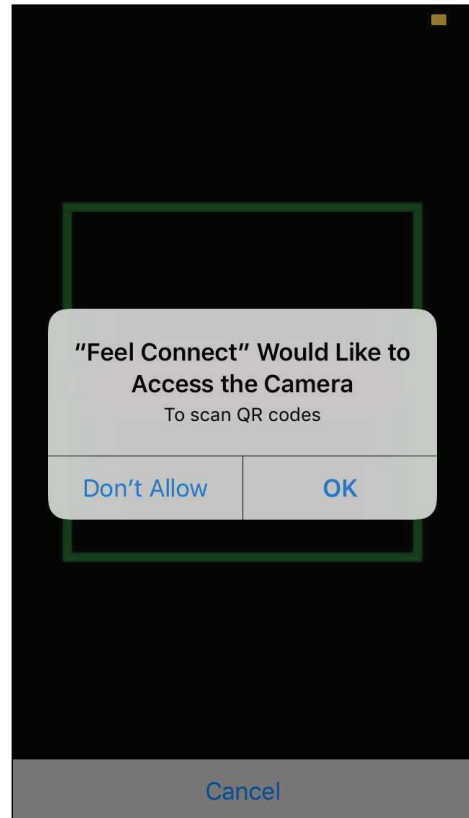
6. Please select the device you would like to use. Wait for the check mark on the right side to turn green. After the green check has appeared, please select "add selected devices".



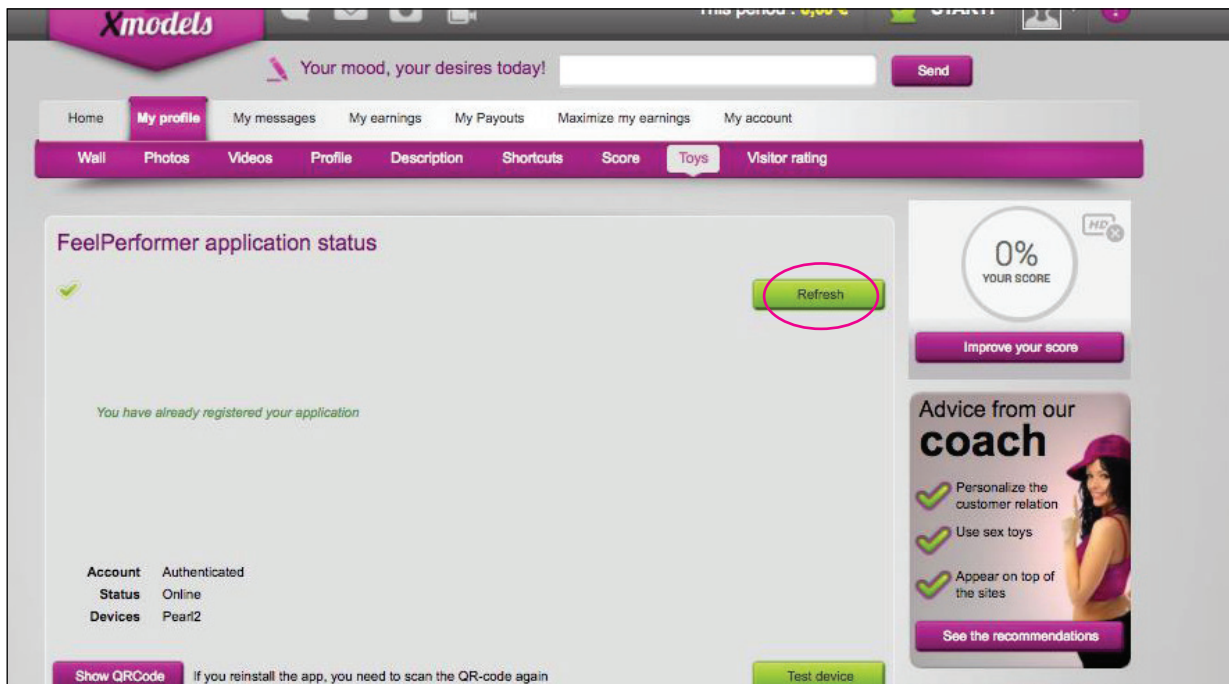
7. Once you have selected "add selected devices", the app will redirect you to this page indicating that your device is now connected to the app.



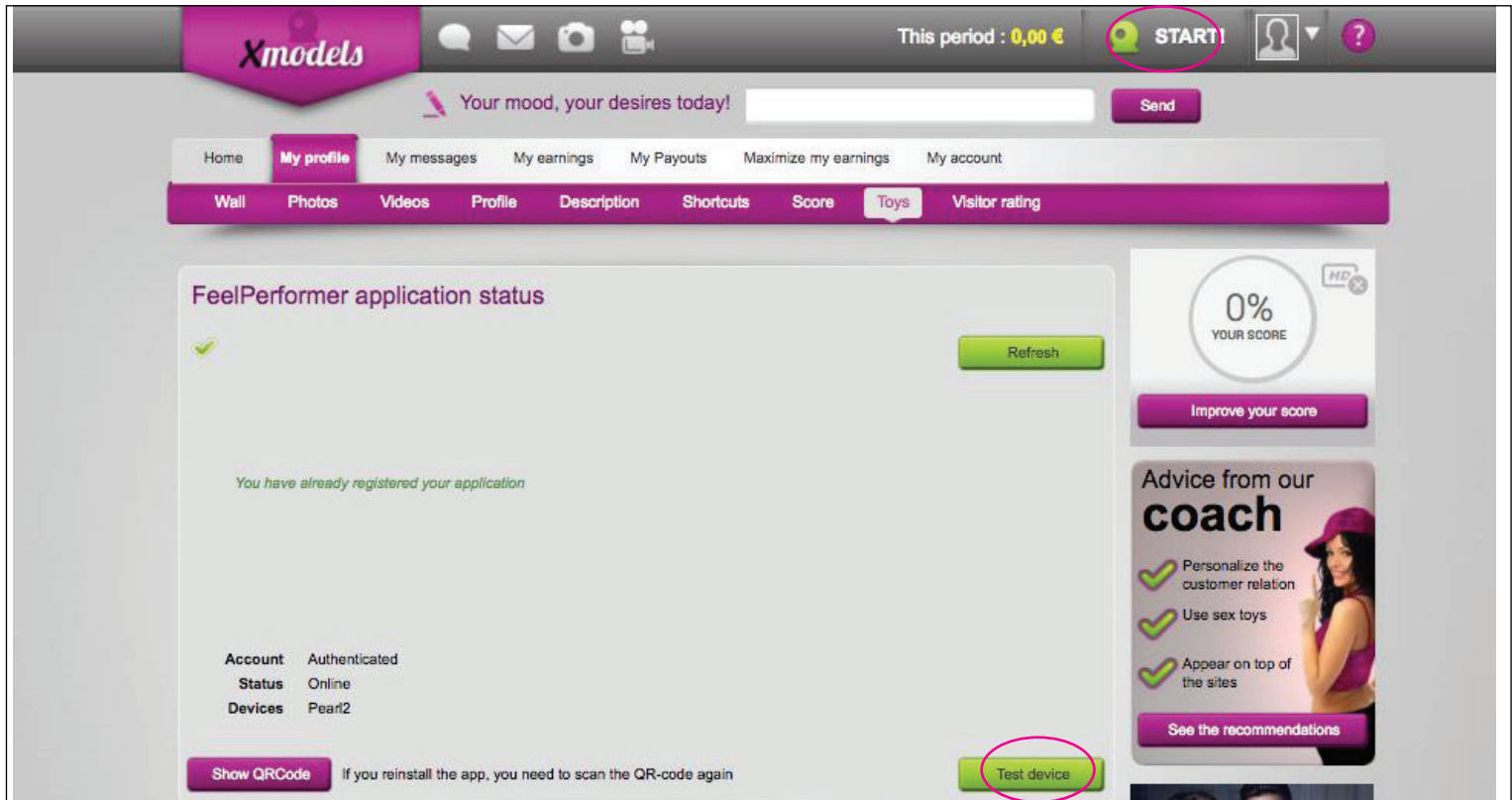
8. Now to connect the device to Xcams, select "Add a website".



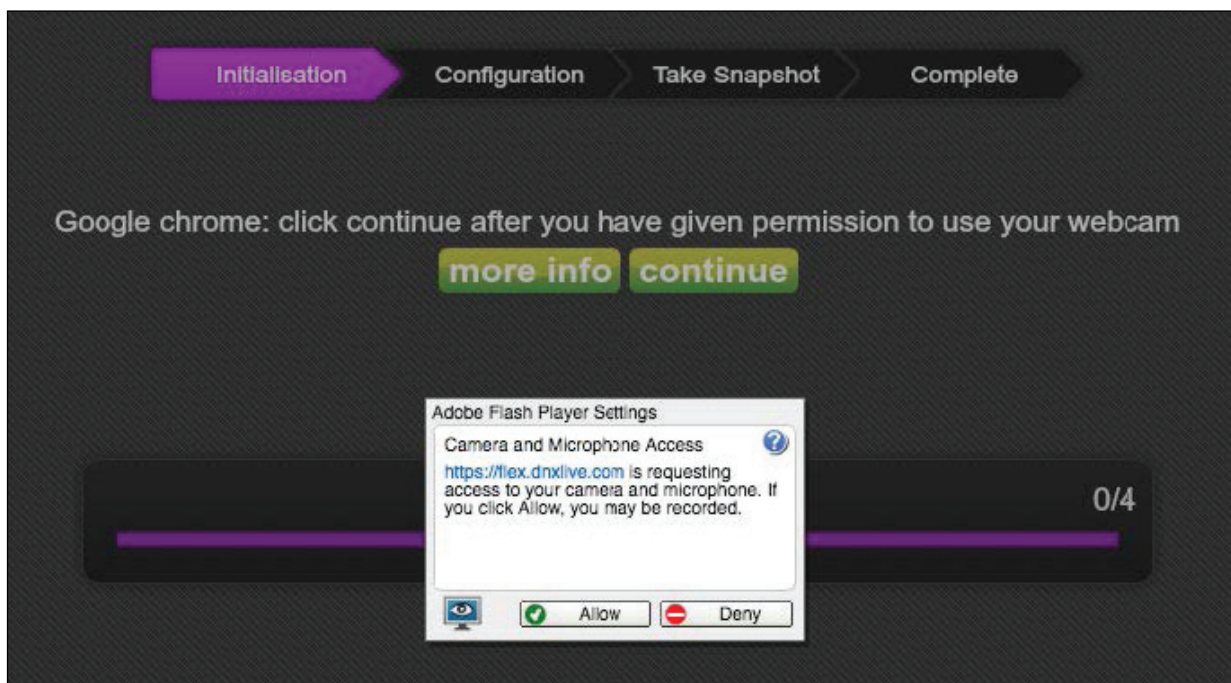
9. Once you click "Add a website", a QR code scanner will show up.



10. Once you have connected to the Xcams, refresh the page and Xcams knows what device is connected.

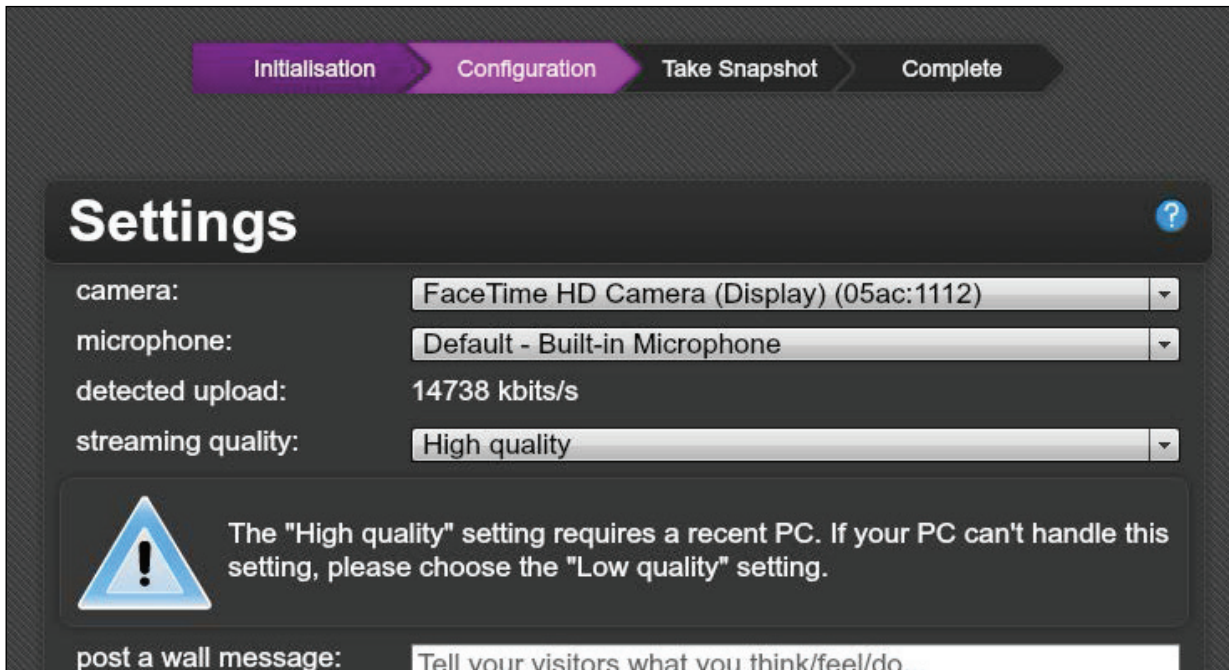


11. Click "Test device" to test your device is connected properly.
12. Click "START!" in the top right corner

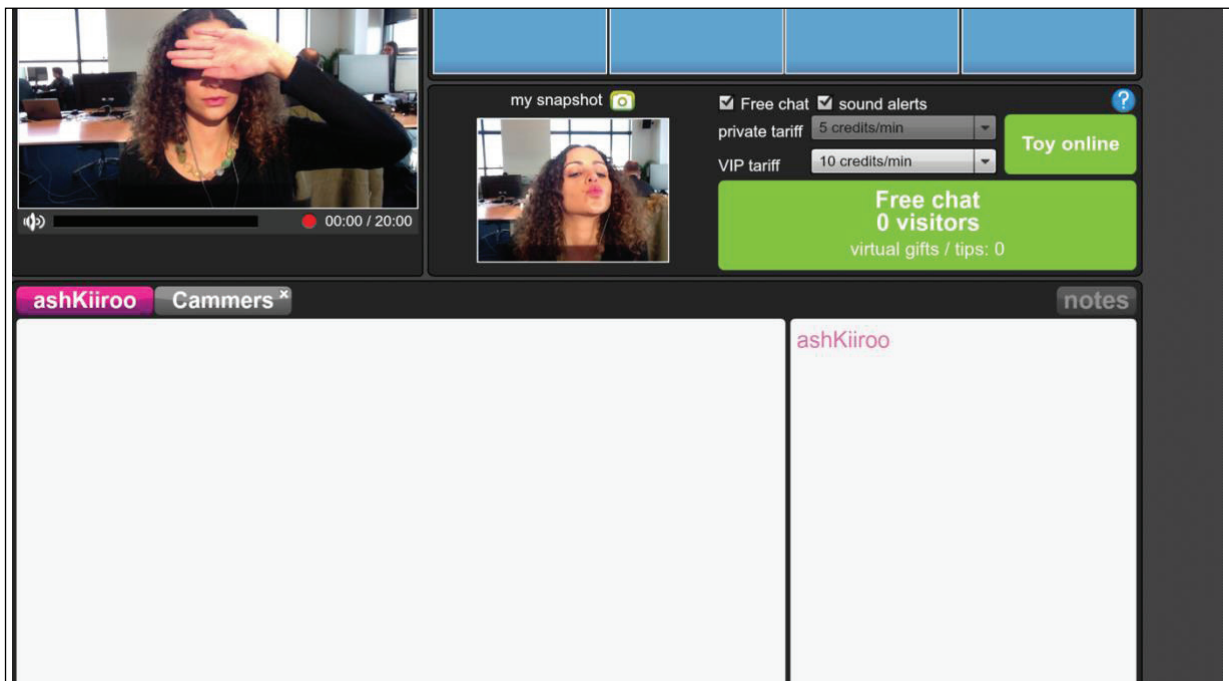


12. Click "Allow" when the adobe Flash player settings window pops up. (If you don't have Adobe Flash Player, the system will prompt you to install it.)
13. Click "Continue"





14. Chose from the dropdown menu your Camera, Microphone and Streaming Quality. Then post a wall message: example: “Hey I’m Kiiroo and I’m going to earn so much money with my interactive devices!”

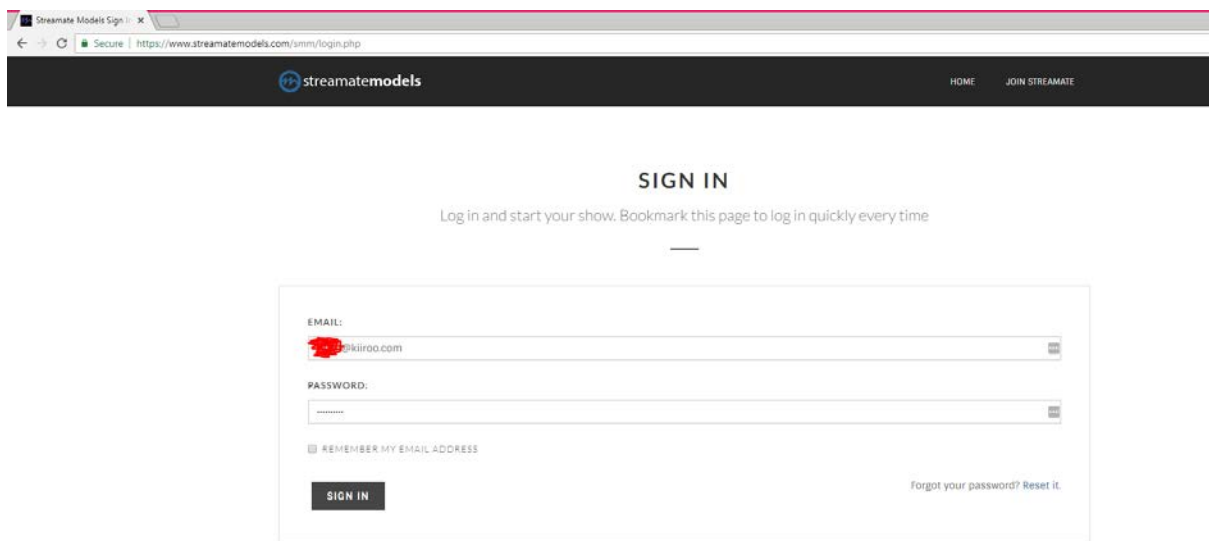


15. The system needs to confirm its you – click “allow” and let the system take one more photograph of you.

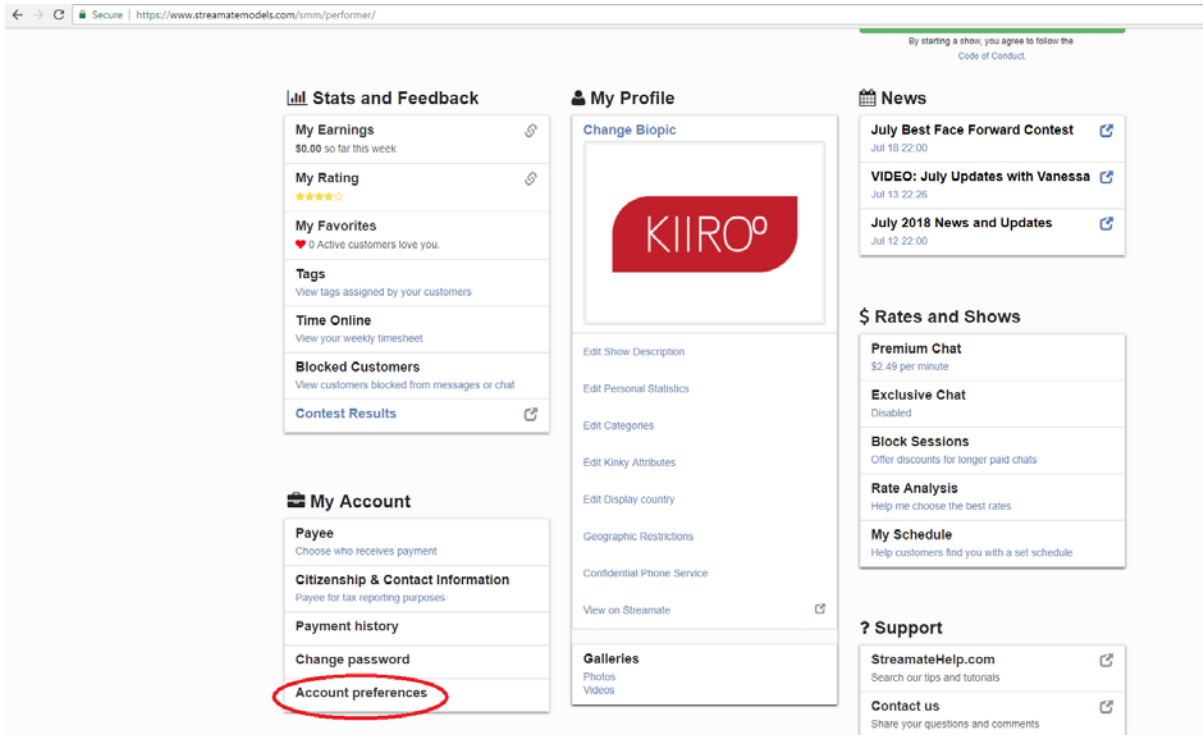
**You are all set up and all tips will automatically be handled by the FeelConnect app and will make your interactive device vibrate!**



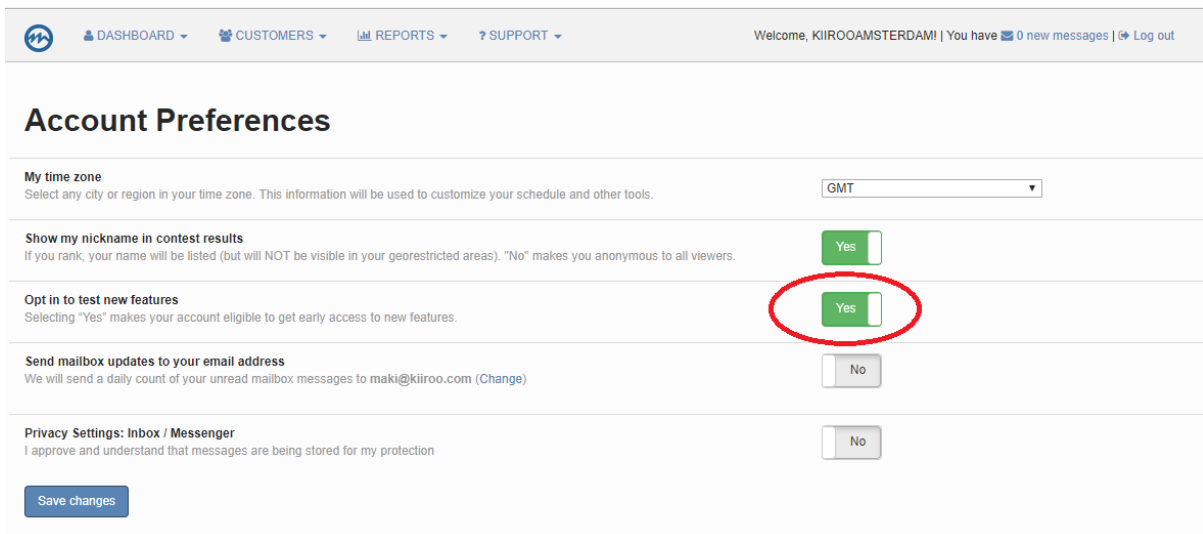
1. Go to <https://www.streamatemodels.com/>
2. Log in with your username and password



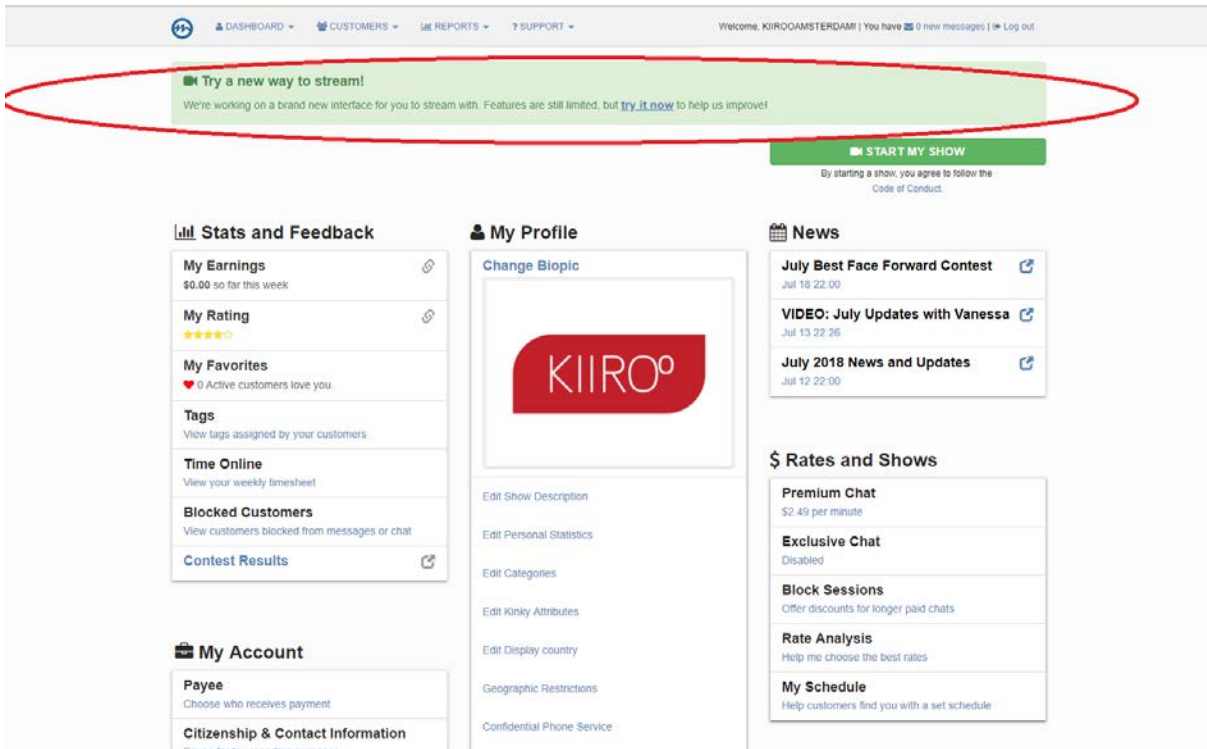
3. When you have reached the Dashboard on the left side bar click “Account Preferences”.



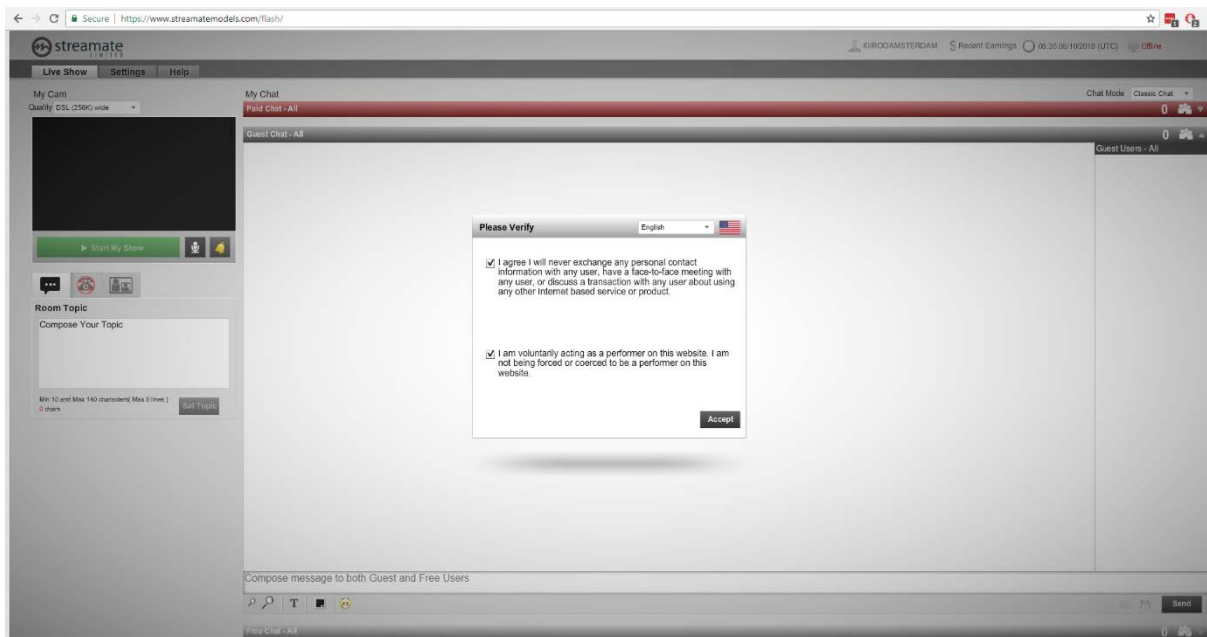
4. Click “Yes” in the “Opt in to test new features” section.

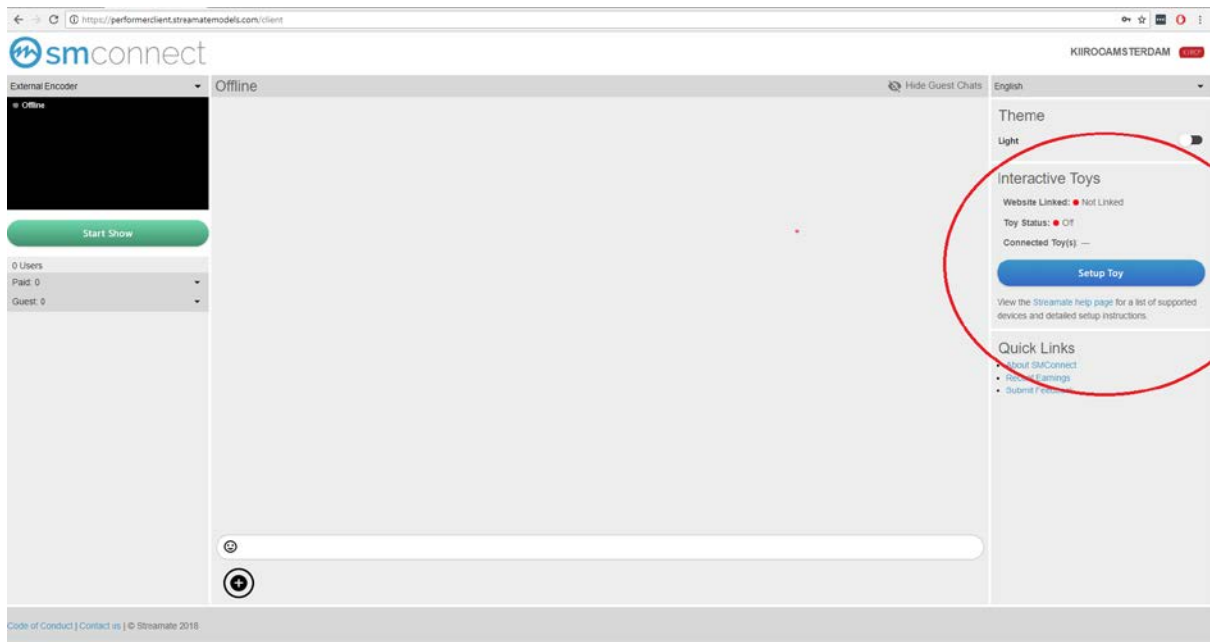


5. Go back to your Dashboards and Click “Try a new way to stream!”

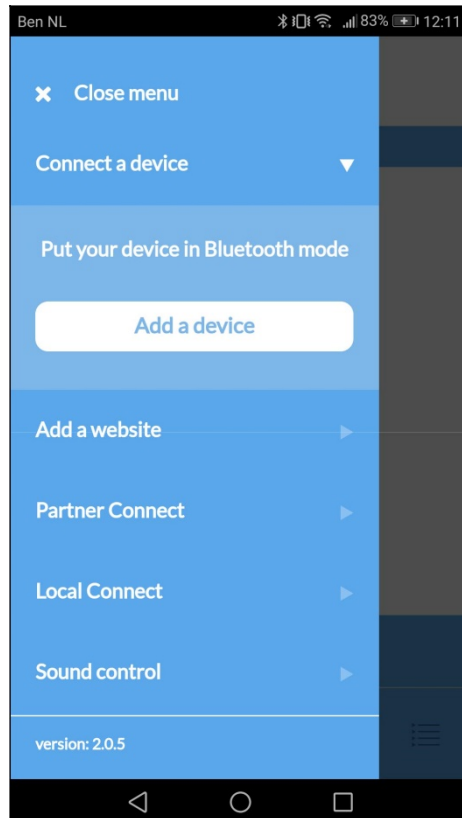


6. Agree to the terms and conditions

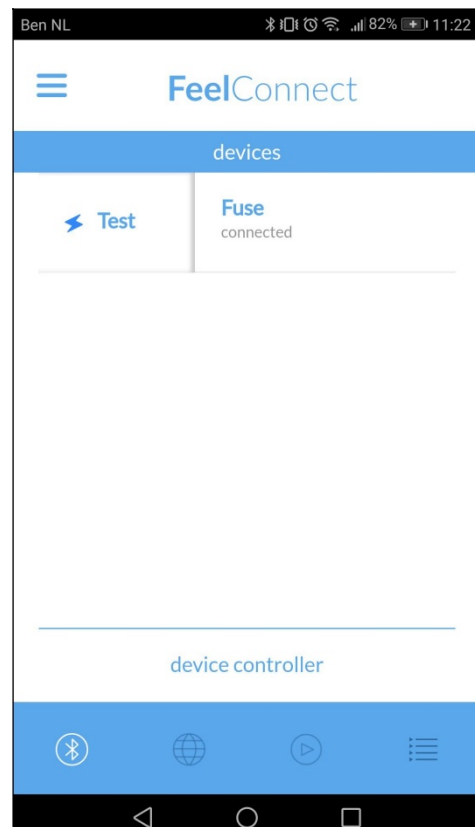
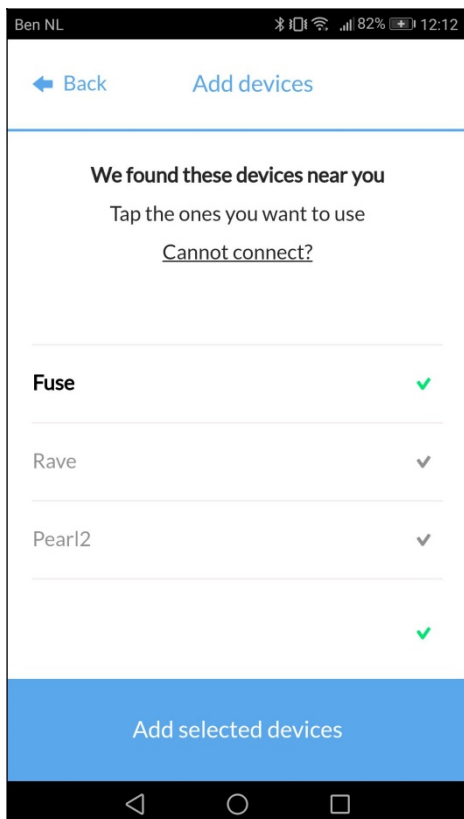




7. On the right section of the screen you will see “Setup Toy”

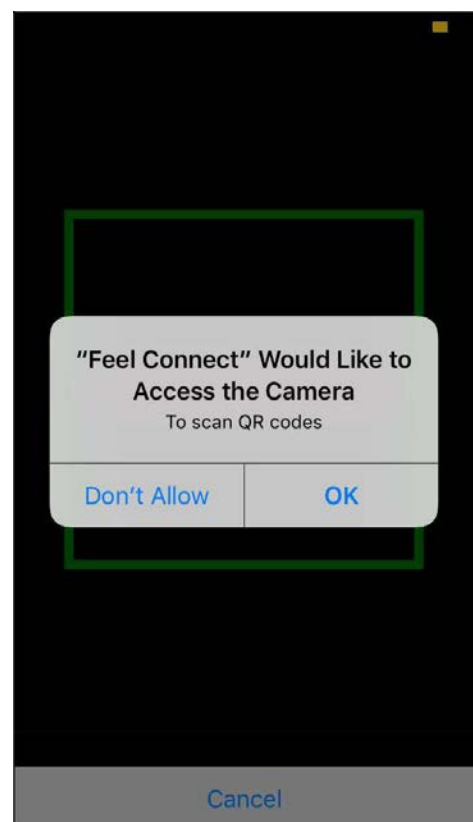
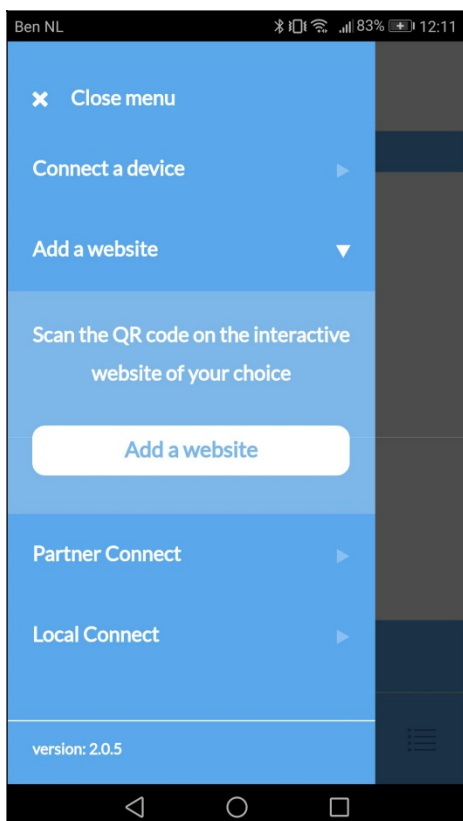


8. Please go to the FeelConnect app on your phone (if you haven't done so, please download it via the iOS App store or Google Play Store). Select "Connect a device".  
**Sidenote:** Make sure your Bluetooth is on and your device is in Bluetooth mode.



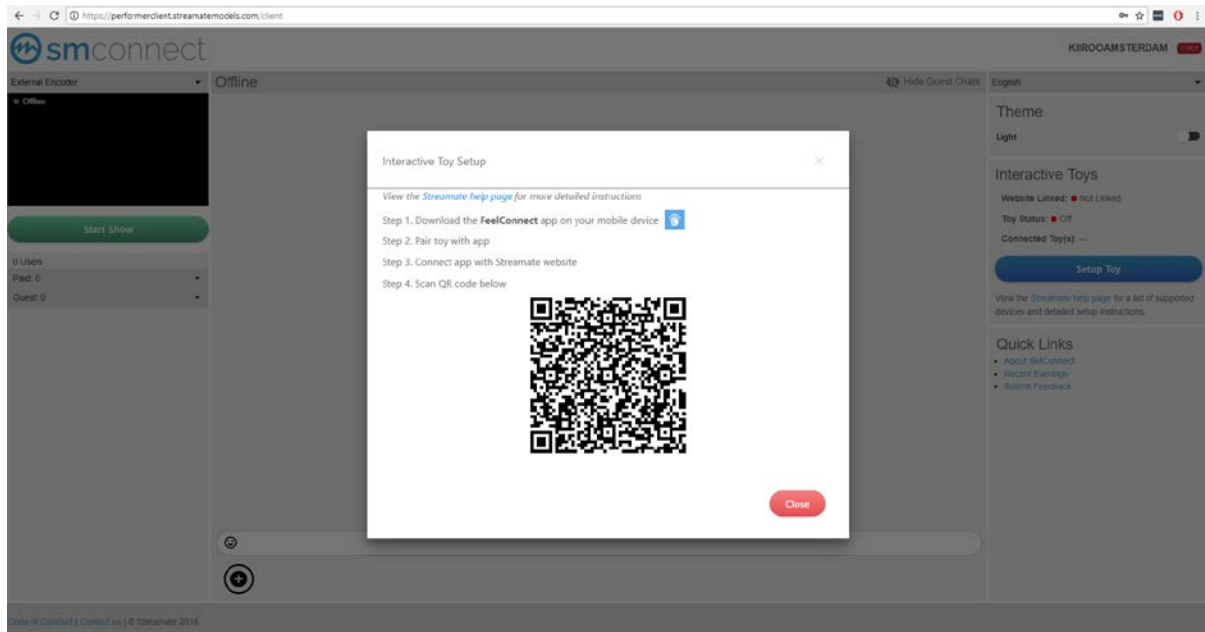
9. Please select the device you would like to use. Wait for the check mark on the right side to turn green. After the green check has appeared, please select “add selected devices”.

10. Once you have selected “add selected devices”, the app will redirect you to this page indicating that your device is now connected to the app. “Slide the slider right and click “test” to check that the device works.



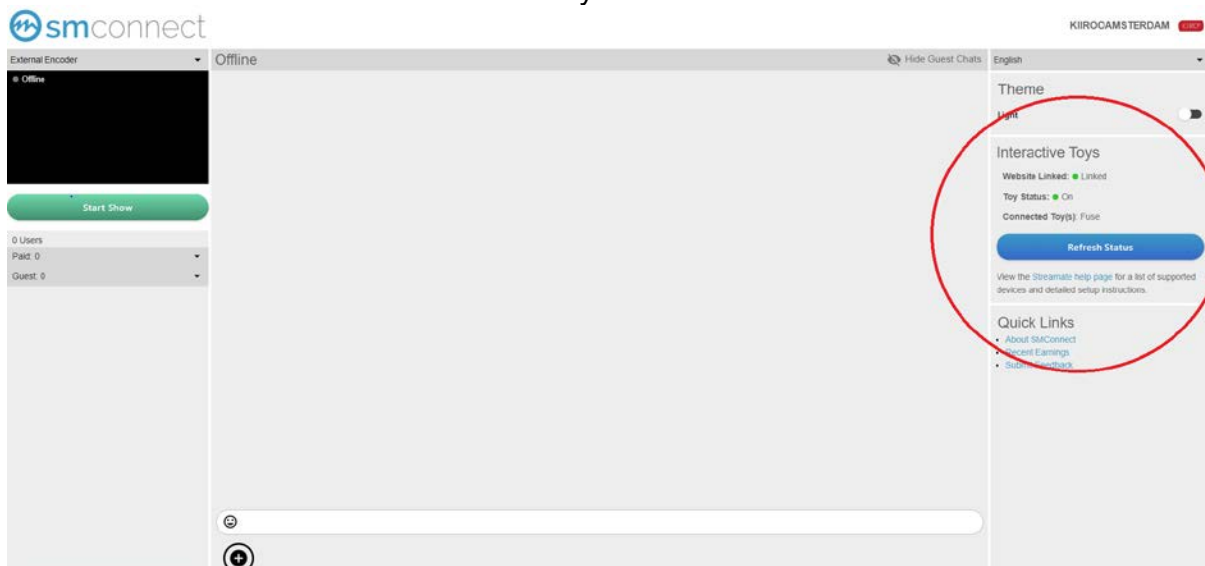
11. Now to connect the device to Streamate, select “Add a website” in the FeelConnect App.

12. Once you click “Add a website”, a QR code scanner will show up.



13. Go back to Streamate and scan the QR code

14. Click “OK” and you are now connected!

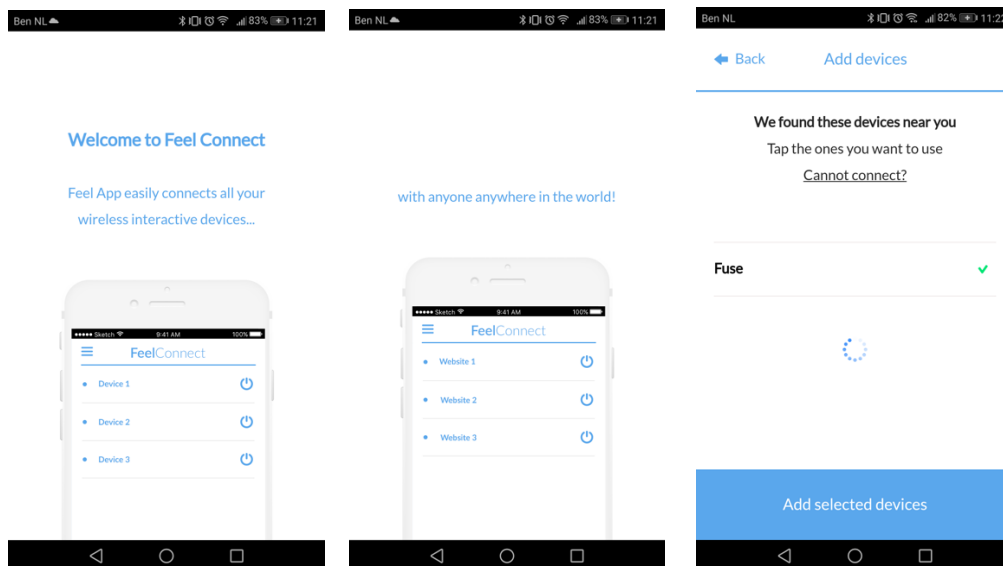


**You are all set up and all tips will automatically be handled by the FeelConnect app and will make your interactive device vibrate!**

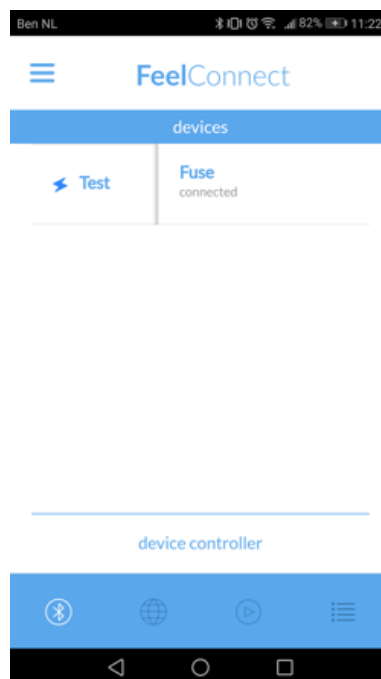


### Connecting the interactive toy with the FeelConnect mobile app:

1. Download the FeelConnect mobile application on the Google PlayStore (Android) or App Store (Iphone)  
Open the app and follow the steps to add a device: Make sure your FeelTech enabled device is on and in pairing mode.



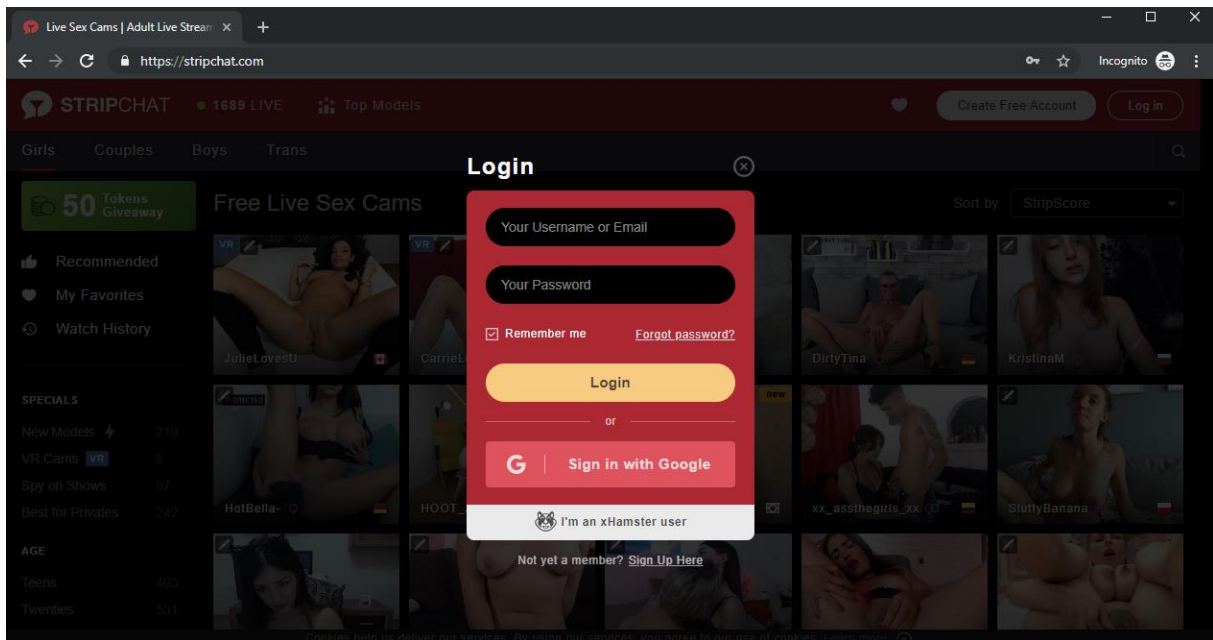
2. Open the menu bar in FeelConnect app and press "connect a device"
3. Click on the product you would like to connect
4. When the "V" turns green press "add selected devices" at the bottom



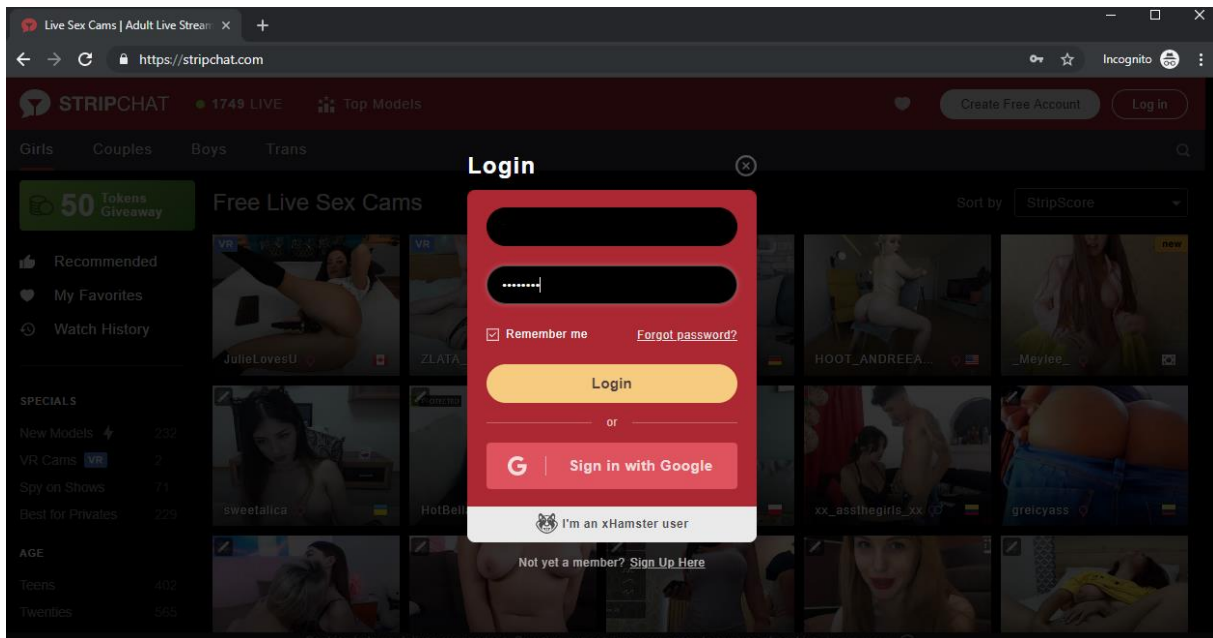
If you slide the slider right, the "test" option shows, click it to ensure your device is properly connected. Your device will vibrate.

## Connecting the FeelConnect app to the Stripchat platform:

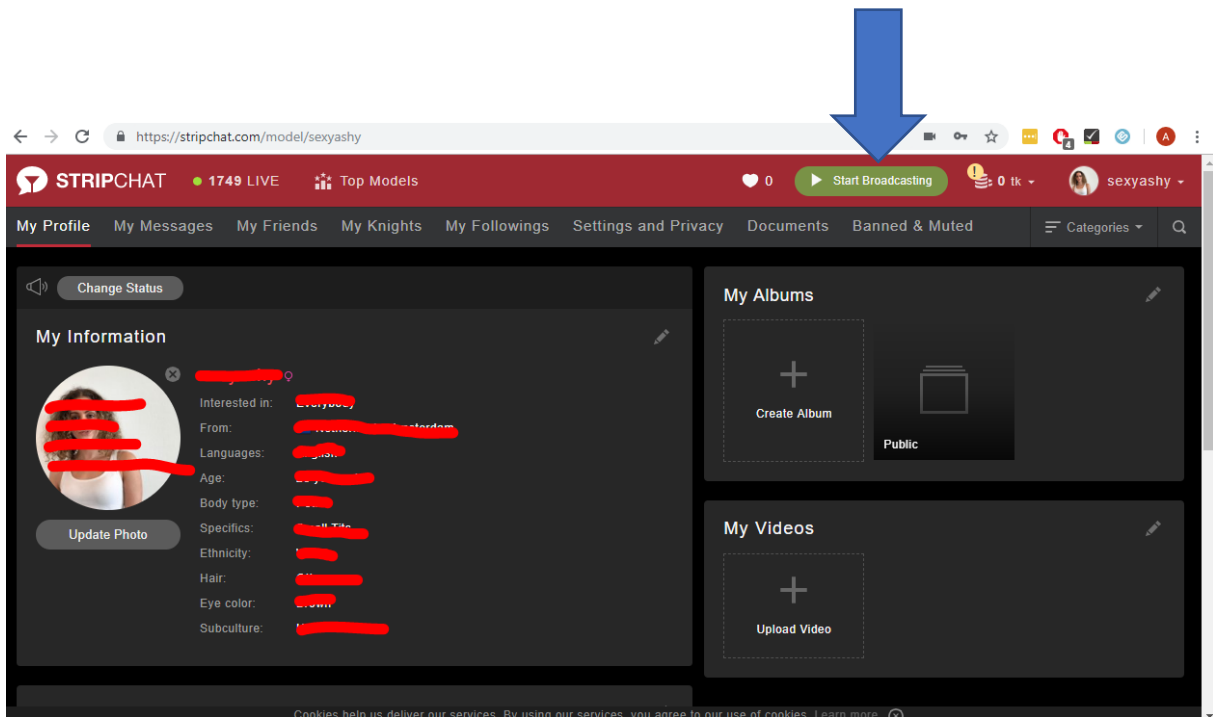
1. Go to <https://stripchat.com>



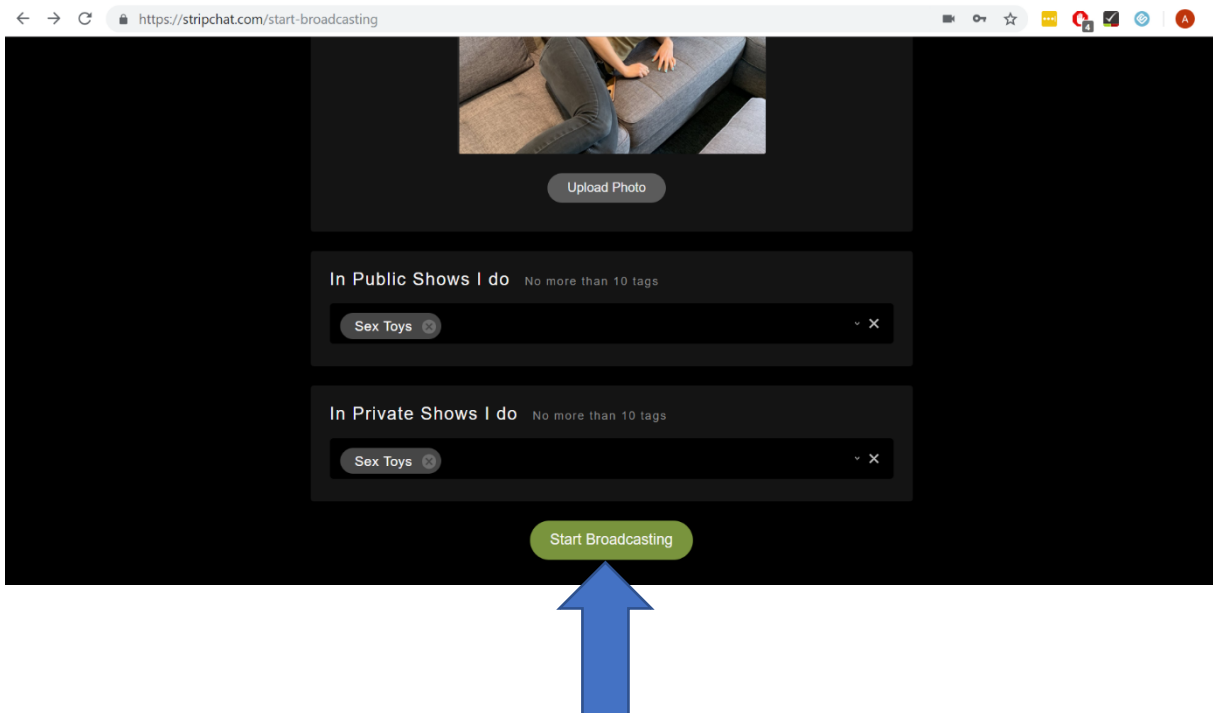
2. Log in with your performer username and password



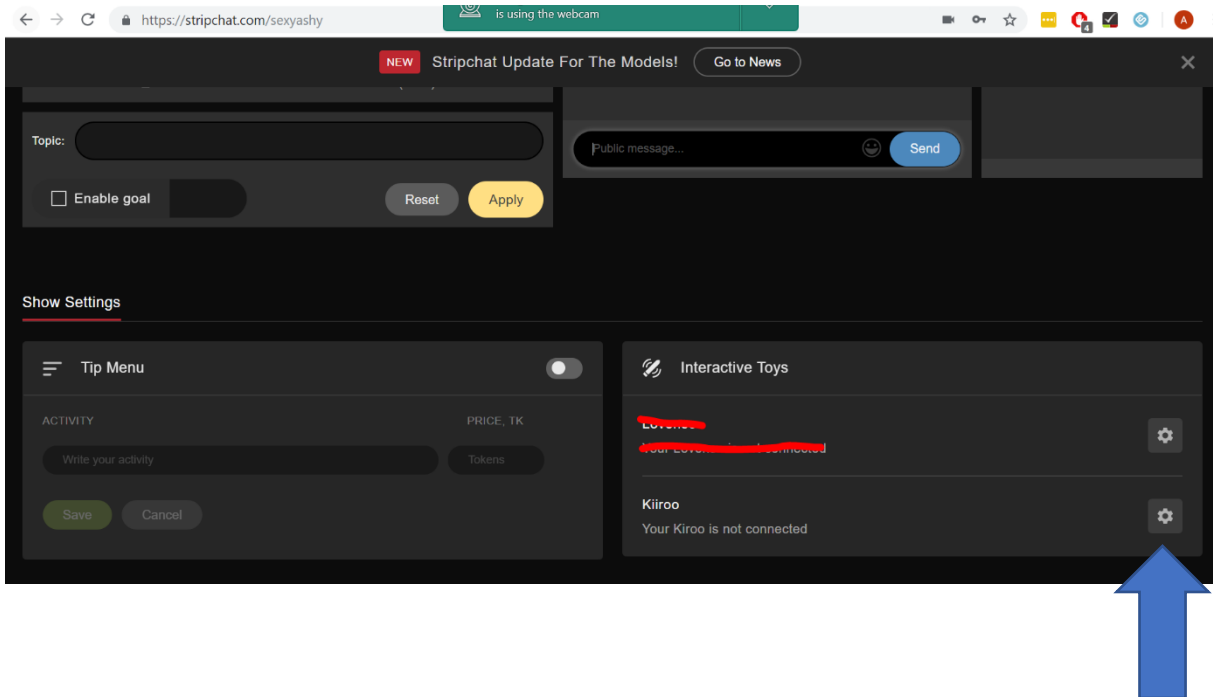
3. Once you are logged in, click "Start Broadcast" in the menu bar



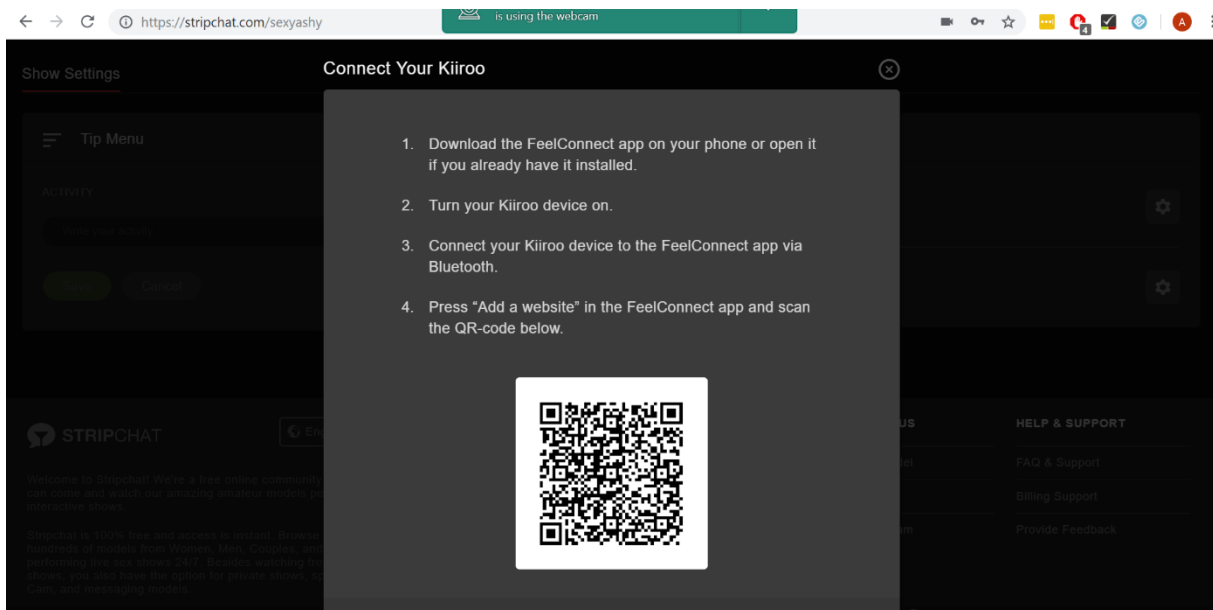
4. Fill in your preferences and then click “Start Broadcasting” at the bottom of the page



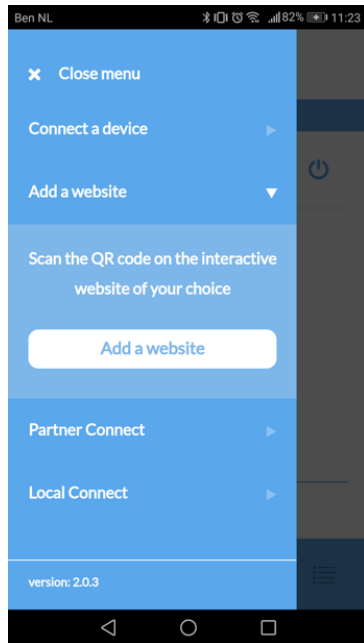
- Once you have started broadcasting, scroll down until you reach the “Interactive Toys” section. Click the settings icon next to KIIROO



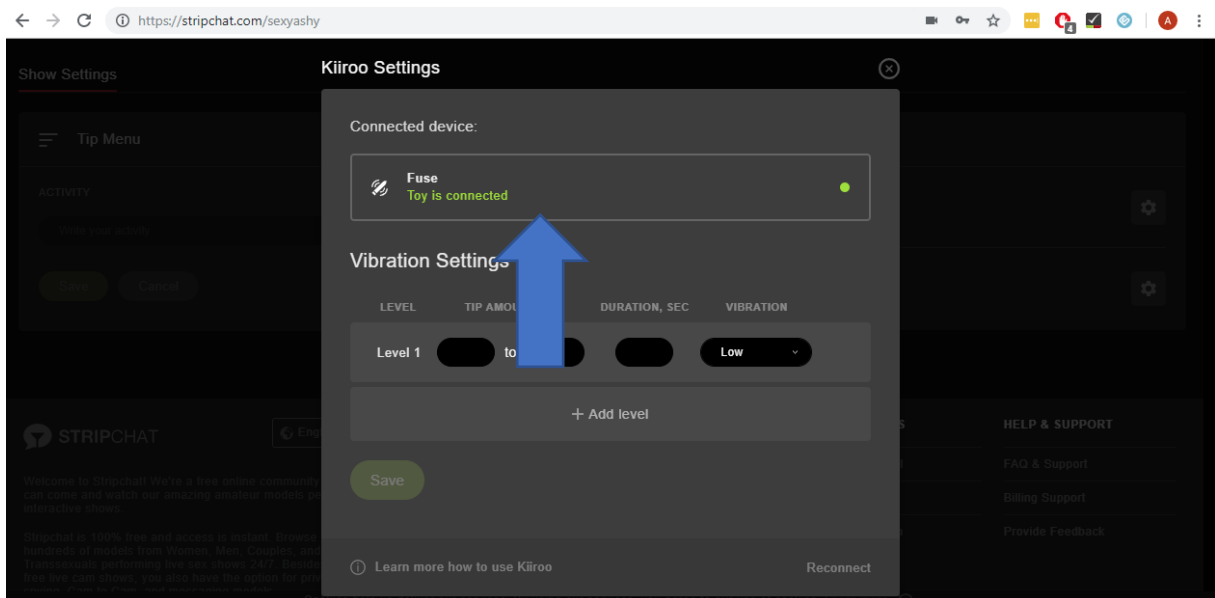
- A QR Code will pop up



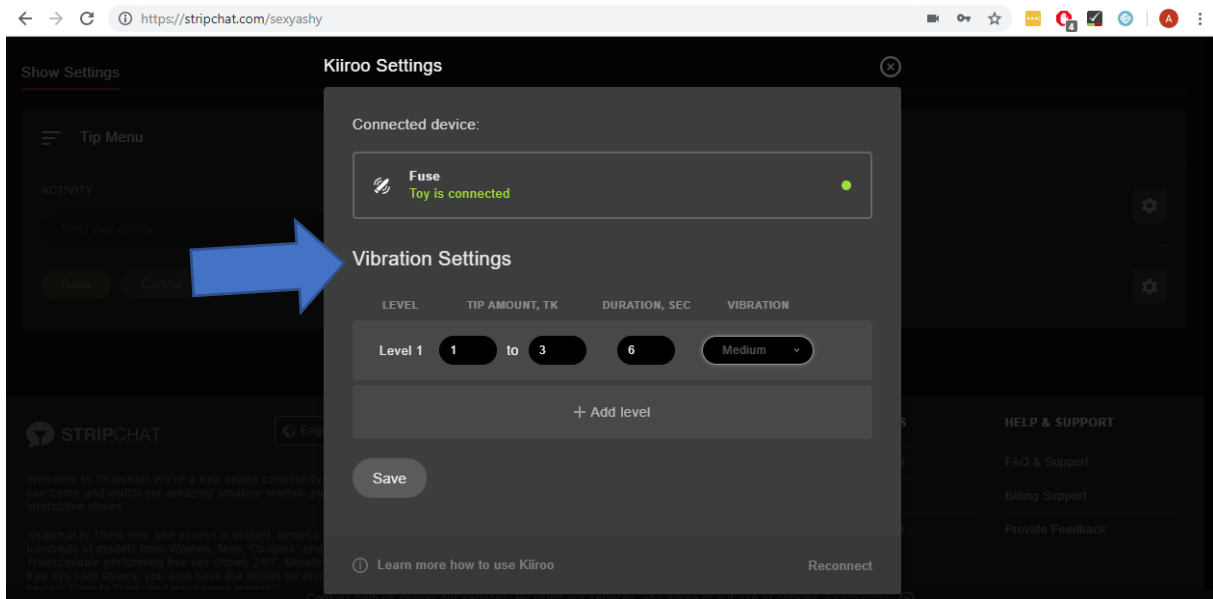
- Go back to the FeelConnect app and click “ Add a website” in the menu bar. Scan the QR code



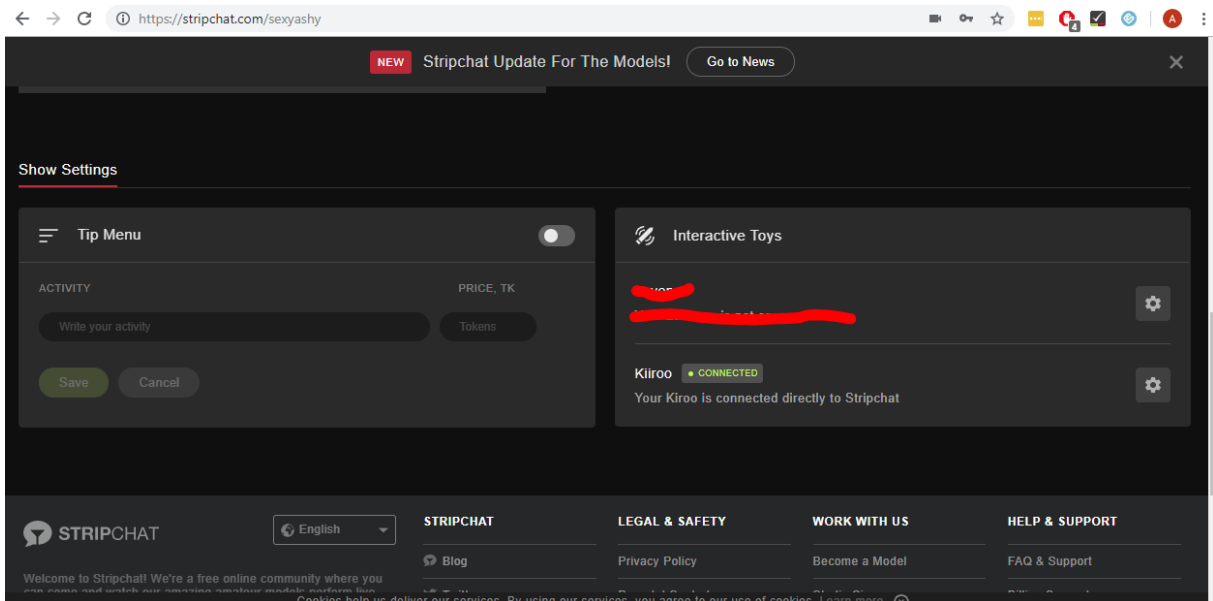
- Once you have connected to Stripchat With the FeelConnect App, you will automatically see the connected device



- Now fill in your Vibration Settings and then click “save”:



10. Go back to your broadcast page and you will see you are connected!



11. You are all set up and all tips will automatically be handled by the FeelConnect app and will make your interactive device vibrate!